



**Category:** Monoclonal Antibodies      **Cat. #** V9076-1      **Product Name:** Glycophorin – Purified

**Description:**

Anti- human Glycophorin monoclonal antibody. Also know as GYPA, CD235a, GPA, GPSAT, MN, MNS, GPErik, GPSAT. Glycophorins A and B which are single pass membrane sialoglycoproteins. GPA is the carrier of blood group M and N specificities, while GPB accounts for S and U specificities. GPA and GPB provide the cells with a large mucin like surface and it has been suggested this provides a barrier to cell fusion, so minimizing aggregation between red blood cells in the circulation.

**Immunogen:**

Human erythrocytes, treated with neuraminidase.

**Application:**

Immunohistochemistry (Paraffin/Frozen (acetone fixed)) 1:50-1:100, ELISA

**Species Reactivity:**

Human. Others not tested.

**Recommended Positive Control:**

Erythrocytes

**Presentation:**

20 mM Tris-Borate, 150 mM Sodium Chloride, and 0.05% Sodium Azide, pH 7.5.

**Aliquoting Instructions:**

Do not dilute the entire reconstituted solution at once. Withdraw aliquots as needed with a micropipette and keep concentrated stock at 4° C. Dilute according to the particular application being used. In general, the 0.05M Borate pH 8.0 containing 0.15M Sodium Chloride, 0.05% Sodium Azide, is a good diluent to use with most antibodies.

**Staining Procedure:**

Prolonged fixation in buffered formalin can destroy the epitope. The antibody may be used at a dilution of 1:50 -1:100 . The optimal conditions should be determined by the individual laboratory.

**Storage:**

Store at 2~8o C for short term, freeze under -20oC for long term storage.

**Size:** 0.2mg

**Clone:** B505(A84.B/H2)

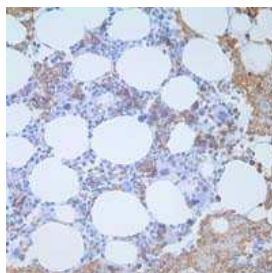
**Isotype:** IgG2a

**Host:** Mouse

**Form:** Concentrated

**Concentration:** 0.5mg/ml

**Units On Hand:** YES



**For Research Use Only**

**Contact: Antagene, Inc. | Tel: 1 (866) 964-2589 | Fax: 1 (888) 225-1868 | Email: [Info@antageneinc.com](mailto:Info@antageneinc.com)**