



Polyclonal Anti- Interleukin 6, *IL-6*

Catalogue No. PA1352

Lot No. 01310123152124

Ig type rabbit IgG

Size 100µg/vial

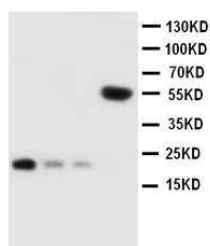
Specificity

Rat, mouse

No cross reactivity with other proteins.

Recommended application

Western blot



Lane 1 : Recombinant Mouse IL-6 Protein 20ng
Lane 2 : Recombinant Mouse IL-6 Protein 10ng
Lane 3 : Recombinant Mouse IL-6 Protein 5ng
Lane 4 : MK(55KD)

Immunogen

A synthetic peptide corresponding to a sequence at the C-terminal of rat IL-6 (195-211 aa), different from the mouse sequence by two amino acids.

Purity

Immunogen affinity purified.

Application

	Concentration	Tested Species	Concluded Species	Antigen Retrieval
WB	1µg/ml	Rat, Ms	-	-
IHC-P	-	-	-	-
IHC-F	-	-	-	-
ICC	-	-	-	-

WB: The detection limit for IL-6 is approximately 5ng/lane under non-reducing and reducing conditions.

Other applications have not been tested.

Optimal dilutions should be determined by end user.

Contents

Each vial contains 5mg BSA, 0.9mg NaCl, 0.2mg Na₂HPO₄, 0.05mg Thimerosal, 0.05mg NaN₃.

Reconstitution

0.2ml of distilled water will yield a concentration of 500µg/ml.

Storage

At -20°C for one year. After reconstitution, at 4°C for one month. It can also be aliquotted and stored frozen at -20°C for longer time.

To reorder contact us at:

Antagene, Inc.

Toll Free: 1(866)964-2589

email: Info@antageneinc.com

BACKGROUND

Interleukin-6 (IL-6) is a protein that in humans is encoded by the *IL6* gene. IL-6 is an interleukin that acts as both a pro-inflammatory and anti-inflammatory cytokine. It is secreted by T cells and macrophages to stimulate immune response to trauma, especially burns or other tissue damage leading to inflammation. IL-6 is one of the most important mediators of fever and of the acute phase response. IL-6 is also essential for hybridoma growth and is found in many supplemental cloning media such as briclone. Bowcock et al. (1988) assigned the IL6 gene to chromosome 7p21. By in situ hybridization and Southern blot analysis of mouse-human hybrid cell lines, Sutherland et al. (1988) mapped the IL6 gene to chromosome 7p15.

REFERENCE

1.Ferguson-Smith AC, Chen YF, Newman MS, May LT, Sehgal PB, Ruddle FH (April 1988). "Regional localization of the interferon-beta 2/B-cell stimulatory factor 2/hepatocyte stimulating factor gene to human chromosome 7p15-p21".