



Product Information Sheet

Polyclonal Anti- Surfactant protein A, **SP-A**

Catalogue No. PA1347

Lot No. 0131012014799

Ig type rabbit IgG

Size 100µg/vial

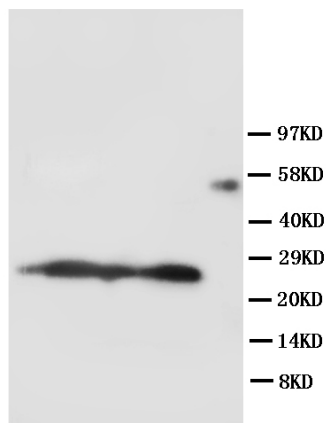
Specificity

Human, rat

No cross reactivity with other proteins.

Recommended application

Western blot



Lane 1 : Rat lung tissue Lysate

Lane 2 : Rat lung tissue Lysate

Lane 3 : Rat lung tissue Lysate

Lane 4 : Rat lung tissue Lysate

Lane 5 : MK (55KD)

Immunogen

A synthetic peptide corresponding to a sequence at the C-terminal of Human SP-A (221-236 aa), different from the rat sequence by two amino acids.

Purity

Immunogen affinity purified.

Application

	Concentration	Tested Species	Concluded Species	Antigen Retrieval
WB	1µg/ml	Hu, Rat	Ms	-
IHC-P	-	-	-	-
IHC-F	-	-	-	-
ICC	-	-	-	-

Other applications have not been tested.

Optimal dilutions should be determined by end user.

Contents

Each vial contains 5mg BSA, 0.9mg NaCl, 0.2mg Na₂HPO₄, 0.05mg Thimerosal, 0.05mg NaN₃.

Reconstitution

0.2ml of distilled water will yield a concentration of 500µg/ml.

To reorder contact us at:

Antagene, Inc.

Toll Free: 1(866)964-2589

email: Info@antageneinc.com

FOR RESEARCH USE ONLY. NOT FOR DIAGNOSTIC AND CLINICAL USE.

Storage month. It can also be aliquotted and stored frozen at -20°C for longer
At -20°C for one year. After time.
reconstitution, at 4°C for one

BACKGROUND

Surfactant protein A is an innate immune system collectin. The gene encoding SP-A map to mouse chromosome 14.¹Surfactant protein-A, which plays a role in innate host defense in the lung, is also expressed in the Eustachian tube. We report that the frequency of specific surfactant protein-A haplotypes and genotypes differs between children with recurrent otitis media compared with a control population.²

REFERENCE

- 1、 Moore, K. J., D'Amore-Bruno, M. A., Korfhagen, T. R., Glasser, S. W., Whitsett, J. A., Jenkins, N. A., Copeland, N. G. Chromosomal localization of three pulmonary surfactant protein genes in the mouse. *Genomics* 12: 388-393, 1992.
- 2、 Ramet, M., Lofgren, J., Albo, O.-P., Hallman, M. Surfactant protein-A gene locus associated with recurrent otitis media. *J. Pediat.* 138: 266-268, 2001.