



Product Information Sheet

Polyclonal Anti- Somatostatin

Catalogue No. PA1346

Lot No. 0131012014699

Ig type rabbit IgG

Size 100µg/vial

Specificity

Human, rat, mouse

No cross reactivity with other proteins.

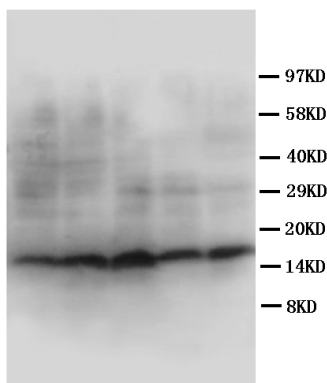
Recommended application

Western blot

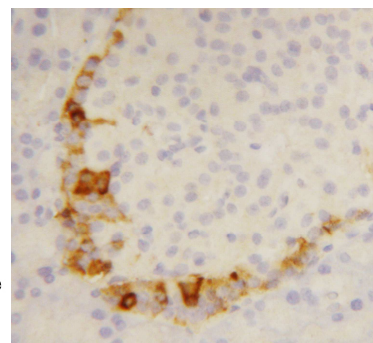
Immunohistochemistry(P)

Immunohistochemistry(F)

Immunocytochemistry



Lane 1 : MM453 Whole Cell Lysate
Lane 2 : MM231 Whole Cell Lysate
Lane 3 : HeLa Whole Cell Lysate
Lane 4 : HT1080 Whole Cell Lysate
Lane 5 : SW620 Whole Cell Lysate



Immunogen

A synthetic peptide corresponding to a sequence AGCKNFFWKFTTSC (1-14 aa), identical to the related mouse and rat sequence.

Purity

Immunogen affinity purified.

Application

	Concentration	Tested Species	Concluded Species	Antigen Retrieval
WB	1µg/ml	Hu	-	-
IHC-P	1µg/ml	Hu, Rat, Ms	-	By heat
IHC-F	1µg/ml	Rat	Ms	-
ICC	1µg/ml	Hu	-	-

Other applications have not been tested.

Optimal dilutions should be determined by end user.

To reorder contact us at:

Antagene, Inc.

Toll Free: 1(866)964-2589

email: Info@antageneinc.com

Contents

Each vial contains 5mg BSA, 0.9mg NaCl, 0.2mg Na₂HPO₄, 0.05mg Thimerosal, 0.05mg NaN₃.

FOR RESEARCH USE ONLY. NOT FOR DIAGNOSTIC AND CLINICAL USE.

Reconstitution

0.2ml of distilled water will yield a concentration of 500µg/ml.

Storage

At -20°C for one year. After reconstitution, at 4°C for one month. It can also be aliquotted and stored frozen at -20°C for longer time.

BACKGROUND

Somatostatin is a 14-amino-acid neuropeptide and hormone that inhibits the secretion of several peptide hormones. Southern blot analysis of 41 hybrids, including some containing translocations of human chromosomes, placed SST in the q21 leads to qter region of chromosome 3.¹ somatostatin may provide an essential cue for accelerating the movement of granule cells in the early phase and for terminating the movement in the late phase through altering intracellular Ca²⁺ concentrations and K⁺ channel activity.²

REFERENCE

- 1、Naylor, S. L., Sakaguchi, A. Y., Shen, L.-P., Bell, G. I., Rutter, W. J., Shows, T. B. Polymorphic human somatostatin gene is located on chromosome 3. Proc. Nat. Acad. Sci. 80: 2686-2689, 1983.
- 2、Yacubova, E., Komuro, H. Stage-specific control of neuronal migration by somatostatin. Nature 415: 77-81, 2002.