



## Product Information Sheet

### Polyclonal Anti- Fas-associated factor-1, **FAF1**

**Catalogue No.** PA1337

**Lot No.** 0131012033799

**Ig type** rabbit IgG

**Size** 100µg/vial

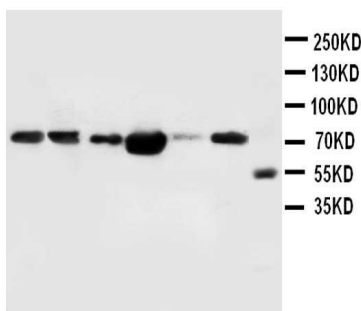
#### Specificity

Human, rat

No cross reactivity with other proteins.

#### Recommended application

Western blot



Lane 1 : Rat Testicular tissue Lysate  
Lane 2 : MM453 Whole Cell Lysate  
Lane 3 : MM231 Whole Cell Lysate  
Lane 4 : HeLa Whole Cell Lysate  
Lane 5 : SMMC Whole Cell Lysate  
Lane 6 : SW620 Whole Cell Lysate  
Lane 7 : Marker

#### Immunogen

A synthetic peptide corresponding to a sequence at the N-terminal of human FAF1 (1-22 aa), identical to the related mouse and rat sequence.

#### Purity

Immunogen affinity purified.

#### Application

	Concentration	Tested Species	Concluded Species	Antigen Retrieval
WB	1µg/ml	Hu, Rat	Ms	-
IHC-P	-	-	-	-
IHC-F	-	-	-	-
ICC	-	-	-	-

*Other applications have not been tested.*

*Optimal dilutions should be determined by end user.*

#### Contents

Each vial contains 5mg BSA, 0.9mg NaCl, 0.2mg Na<sub>2</sub>HPO<sub>4</sub>, 0.05mg Thimerosal, 0.05mg NaN<sub>3</sub>.

#### Reconstitution

0.2ml of distilled water will yield a concentration of 500µg/ml.

#### Storage

At -20°C for one year. After reconstitution, at 4°C for one month. It can also be aliquotted and stored frozen at -20°C for longer time.

To reorder contact us at:

**Antagene, Inc.**

**Toll Free: 1(866)964-2589**

**email: Info@antageneinc.com**

**FOR RESEARCH USE ONLY. NOT FOR DIAGNOSTIC AND CLINICAL USE.**

## **BACKGROUND**

Fas-associated factor-1 (FAF1) is a Fas-binding pro-apoptotic protein that is a component of the death-inducing signaling complex in Fas-mediated apoptosis. FAF1 is involved in negative regulation of NF-kappaB activation. In addition to the previously known function as a component of the Fas death-inducing signaling complex, i.e. NF-kappaB activity suppressor by cytoplasmic retention of NF-kappaB p65 via physical interaction.<sup>1</sup> hFAF1 was expressed abundantly in testis, skeletal muscle, and heart as 2.8 kb mRNA. Polyclonal antibody against hFAF1 detected 74 kD protein, a deduced protein size from the ORF and 40 kD protein in some cell lines.<sup>2</sup>

## **REFERENCE**

- 1、 J Biol Chem. 2004 Jan 23;279(4):2544-9. Epub 2003 Nov 4. Fas-associated factor-1 inhibits nuclear factor-kappaB (NF-kappaB) activity by interfering with nuclear translocation of the RelA (p65) subunit of NF-kappaB. Research Center for Biomedical Resources and the Division of Life Science, PaiChai University, Daejeon 302-735, Korea.
- 2、 1\ Ryu, S. W., Chae, S. K., Lee, K. J., Kim, E. Identification and characterization of human Fas associated factor 1, hFAF1. Biochem. Biophys. Res. Commun. 262: 388-394, 1999.