



Product Information Sheet

Polyclonal Anti-Integrin β 2

Catalogue No. PA1124

Lot No. 08J01

Ig type: rabbit IgG

Size: 100 μ g/vial

Specificity

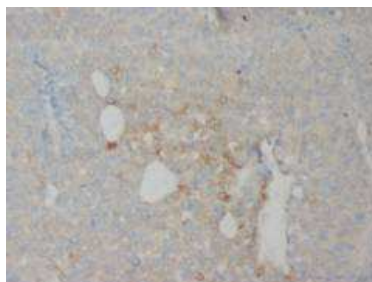
Human, rat, mouse.

No cross reactivity with other proteins.

Recommended application

Western blot

Immunohistochemistry(P)



Immunogen

A synthetic peptide mapping at the N-terminal of human Integrin β 2, different from the related mouse sequence by five amino acids.

Purity

Immunogen affinity purified.

Application

Western blot

At 1-2 μ g/ml with the appropriate system to detect Integrin β 2 in cells and tissues.

Immunohistochemistry(P)

At 1-2 μ g/ml to detect Integrin β 2 in formalin fixed and paraffin embedded tissues. Boiling the sections is required.

Other applications have not been tested.

Optimal dilutions should be determined by end user.

Contents

Each vial contains 5mg BSA, 0.9mg NaCl, 0.2mg Na₂HPO₄, 0.05mg Thimerosal, 0.05mg NaN₃.

Reconstitution

0.2ml of distilled water will yield a concentration of 500 μ g/ml.

Storage

At -20°C for one year. After reconstitution, at 4°C for one month. It can also be aliquotted and stored frozen at -20°C for longer time.

To reorder contact us at:

Antagene, Inc.

Toll Free: 1(866)964-2589

email: Info@antageneinc.com

BACKGROUND

The beta-2 integrin chain gene is designated ITGB2 and the leukocyte antigen has been designated CD18. The 3 alpha integrin chains associated individually with the beta-2 chain as a heterodimer have gene designations of ITGAL, ITGAM, and ITGAX, and leukocyte antigen designations of CD11A, CD11B, and CD11C, respectively. The expression of CD18 was increased in lymphoblastoid cells from persons with Down syndrome, consistent with the location of the gene on chromosome 21¹. The ITGB2

FOR RESEARCH USE ONLY. NOT FOR DIAGNOSTIC AND CLINICAL USE.

gene spans approximately 40 kb and contains 16 exons and all exon/intron boundaries conform to the GT/AG splicing consensus². Furthermore, ITGB2 was constitutively clustered. Although it was expressed on the cell surface at normal levels and was capable of function following extracellular stimulation, it could not be activated via the “inside-out” signaling pathways³.

REFERENCE

1. Taylor, G. M.; Williams, A.; D'Souza, S. W.; Fergusson, W. D.; Donnai, D.; Fennell, J.; Harris, R. : The expression of CD18 is increased on trisomy 21 (Down syndrome) lymphoblastoid cells. *Clin. Exp. Immun.* 71: 324-328, 1988.
2. Weitzman, J. B.; Wells, C. E.; Wright, A. H.; Clark, P. A.; Law, S. K. A. : The gene organisation of the human beta-2 integrin subunit (CD18). *FEBS Lett.* 294: 97-103, 1991.
3. McDowall, A.; Inwald, D.; Leitinger, B.; Jones, A.; Liesner, R.; Klein, N.; Hogg, N. : A novel form of integrin dysfunction involving beta-1, beta-2, and beta-3 integrins. *J. Clin. Invest.* 111: 51-60, 2003.