



Polyclonal Anti-Sonic hedgehog protein, *SHH*

Catalogue No. PA1072

Lot No. 08A12

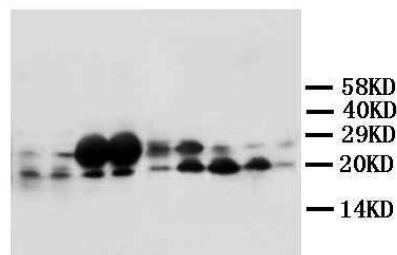
Ig type: rabbit IgG

Size: 100µg/vial

Specificity

Human, mouse, rat.

No cross reactivity with other proteins.



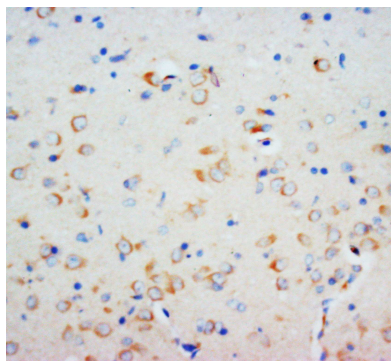
Lane 1 : Rat liver tissue Lysate
Lane 2 : Rat liver tissue Lysate
Lane 3 : Rat brain tissue Lysate
Lane 4 : Rat brain tissue Lysate
Lane 5 : MCF-7 Whole Cell Lysate
Lane 6 : HeLa Whole Cell Lysate
Lane 7 : SMMC Whole Cell Lysate
Lane 8 : HT1080 Whole Cell Lysate
Lane 9 : SW620 Whole Cell Lysate

Recommended application

Western blot

Immunohistochemistry(P)

Immunocytochemistry



To reorder contact us at:

Antagene, Inc.

Toll Free: 1(866)964-2589

email: Info@antageneinc.com

BACKGROUND

The mouse, chicken, and zebrafish Shh homologs are highly conserved. SHH expression was not detected in adult tissues examined; however, it was expressed in fetal intestine, liver, lung, and kidney.

SHH gene is mapped to 7q. SHH mutations are not a frequent cause of isolated oral clefts.

REFERENCE

1. Tsukurov, O.; Boehmer, A.; Flynn, J.; Nicolai, J.-P.; Hamel, B. C. J.; Traill, S.; Zaleske, D.; Mankin, H. J.; Yeon, H.; Ho, C.; Tabin, C.; Seidman, J. G.; Seidman, C. : A complex bilateral polysyndactyly disease locus maps to chromosome 7q36. *Nature Genet.* 6: 282-286, 1994.