



## Product Information Sheet

### Polyclonal Anti-Neuron specific enolase, **NSE**

**Catalogue No.** PA1061

**Lot No.** 03A01

**Ig type:** rabbit IgG

**Size:** 100µg/vial

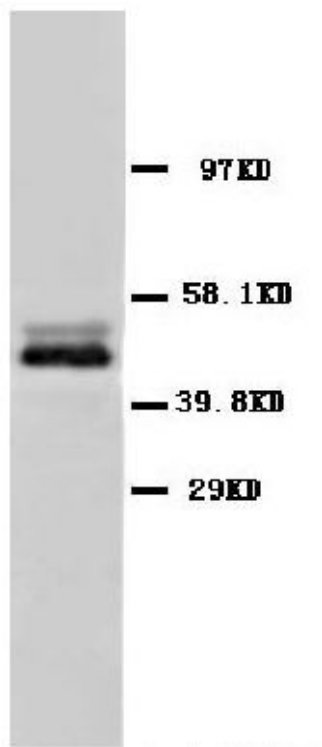
**Specificity**

Human, mouse, rat.

No cross reactivity with other proteins.

**Recommended application**

*Western blot*



**Immunogen**

A peptide mapping at the C-terminus of NSE of human origin, identical to the related mouse and rat sequence.

**Purity**

Immunogen affinity purified.

**Application**

*Western blot*

At 1-2µg/ml with the appropriate system to detect NSE in cells and tissues.

*Other applications have not been tested.*

*Optimal dilutions should be determined by end user.*

**Contents**

Each vial contains 5mg BSA, 0.9mg NaCl, 0.2mg Na<sub>2</sub>HPO<sub>4</sub>, 0.05mg Thimerosal, 0.05mg NaN<sub>3</sub>.

**To reorder contact us at:**

**Antagene, Inc.**

**Toll Free: 1(866)964-2589**

**email: Info@antageneinc.com**

**Reconstitution**

0.2ml of distilled water will yield a concentration of 500µg/ml.

**FOR RESEARCH USE ONLY. NOT FOR DIAGNOSTIC AND CLINICAL USE.**

**Storage** month. It can also be aliquotted and stored frozen at -20°C for longer  
At -20°C for one year. After time.  
reconstitution, at 4°C for one

## **BACKGROUND**

NSE (neuron specific enolase), also known as Enolase 2(ENO2), is found in elevated concentrations in plasma in certain neoplasias. The enolases catalyze the interconversion of 2-phosphoglycerate to phosphoenolpyruvate in the glycolytic pathway. ENO2 gene contains 12 exons distributed over 9,213 nucleotides. Human neurone-specific enolase is mapped to chromosome 12p13.

## **REFERENCE**

1. Craig, S. P.; Day, I. N. M.; Thompson, R. J.; Craig, I. W. : Localization of human neurone-specific enolase to chromosome 12p13. (Abstract) Cytogenet. Cell Genet. 51: 980 only, 1989.
2. Craig, S. P.; Day, I. N. M.; Thompson, R. J.; Craig, I. W. : Localisation of neurone-specific enolase (ENO2) to 12p13. Cytogenet. Cell Genet. 54: 71-73, 1990.
3. Mattei, J. F.; Baeteman, M. A.; Mattei, M. G.; Ardissonne, J. P.; Giraud, F. : Regional assignments of CS and ENO2 on chromosome 12. (Abstract) Cytogenet. Cell Genet. 32: 297 only, 1982.