



Product Information Sheet

Polyclonal Anti-Macrophage migration inhibitory, *MIF*

Catalogue No. PA1052

Lot No. 09K02

Ig type: rabbit IgG

Size: 100µg/vial

Specificity

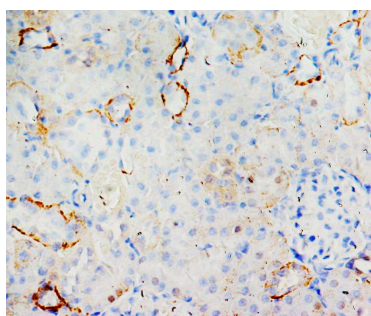
Human, rat.

No cross reactivity with other proteins.

Recommended application

Western blot

Immunohistochemistry(P)



Immunogen

A synthetic peptide corresponding to a sequence at the C-terminal of human MIF, different from the related rat and mouse sequence by single amino acid.

Purity

Immunogen affinity purified.

Application

	Concentration	Tested Species	Concluded Species	Antigen Retrieval
WB	1µg/ml	Hu, Rat	Ms	-
IHC-P	1µg/ml	Hu, Rat	-	By Heat
IHC-F	-	-	-	-
ICC	-	-	-	-

Other applications have not been tested.

Optimal dilutions should be determined by end user.

Contents

Each vial contains 5mg BSA, 0.9mg NaCl, 0.2mg Na₂HPO₄, 0.05mg Thimerosal, 0.05mg NaN₃.

To reorder contact us at:

Antagene, Inc.

Toll Free: 1(866)964-2589

email: Info@antageneinc.com

FOR RESEARCH USE ONLY. NOT FOR DIAGNOSTIC AND CLINICAL USE.

Reconstitution

0.2ml of distilled water will yield a concentration of 500µg/ml.

Storage

At -20°C for one year. After reconstitution, at 4°C for one month. It can also be aliquotted and stored frozen at -20°C for longer time.

BACKGROUND

Macrophage migration inhibitory factor, MIF, is a cytokine released by T-lymphocytes, macrophages, and the pituitary gland that serves to integrate peripheral and central inflammatory responses. MIF gene has 3 exons separated by introns of only 189 and 95 bp, and covers less than 1 kb. Localization of the human gene for macrophage migration inhibitory factor (MIF) to chromosome 22q11.2 MIF plays a critical role in inflammatory diseases and atherogenesis.

REFERENCE

1. Bozza, M.; Kolakowski, L. F., Jr.; Jenkins, N. A.; Gilbert, D. J.; Copeland, N. G.; David, J. R.; Gerard, C. : Structural characterization and chromosomal location of the mouse macrophage migration inhibitory factor gene and pseudogenes. *Genomics* 27: 412-419, 1995
2. Budarf, M.; McDonald, T.; Sellinger, B.; Kozak, C.; Graham, C.; Wistow, G. : Localization of the human gene for macrophage migration inhibitory factor (MIF) to chromosome 22q11.2. *Genomics* 39: 235-236, 1997.
3. Bernhagen, J.; Krohn, R.; Lue, H.; Gregory, J. L.; Zernecke, A.; Koenen, R. R.; Dewor, M.; Georgiev, I.; Schober, A.; Leng, L.; Kooistra, T.; Fingerle-Rowson, G.; Ghezzi, P.; Kleemann, R.; McColl, S. R.; Bucala, R.; Hickey, M. J.; Weber, C. : MIF is a noncognate ligand of CXC chemokine receptors in inflammatory and atherogenic cell recruitment. *Nature Med.* 13: 587-596, 2007.