



Product Information Sheet

Polyclonal Anti- HMGB4

Catalogue No. PA1042

Lot No. 03A01

Ig type: rabbit IgG

Size: 100µg/vial

Specificity

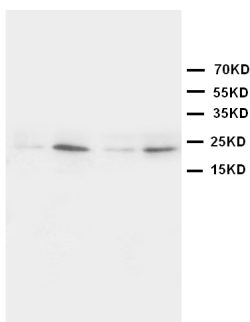
Human, mouse, rat.

No cross reactivity with other proteins.

Recommended application

Western blot

Immunocytochemistry



Lane 1 : Rat brain tissue Lysate

Lane 2 : Rat Testicular tissue Lysate

Lane 3 : Jurkat Whole Cell Lysate

Lane 4 : HT1080 Whole Cell Lysate

Immunogen

A synthetic peptide corresponding to a sequence mapping near the N-terminal of human HMGB4, different to the related mouse and rat sequence by single amino acid.

Purity

Immunogen affinity purified.

Application

Western blot

At 1-2µg/ml with the appropriate system to detect HMGB4 in cells and tissues.

Immunocytochemistry

Suitable

Other applications have not been tested.

Optimal dilutions should be determined by end user.

Contents

Each vial contains 5mg BSA, 0.9mg NaCl, 0.2mg Na₂HPO₄, 0.05mg Thimerosal, 0.05mg NaN₃.

Reconstitution

0.2ml of distilled water will yield a concentration of 500µg/ml.

Storage

At -20°C for one year. After reconstitution, at 4°C for one month. It can also be aliquotted and stored frozen at -20°C for longer time.

To reorder contact us at:

Antagene, Inc.

Toll Free: 1(866)964-2589

email: Info@antageneinc.com

FOR RESEARCH USE ONLY. NOT FOR DIAGNOSTIC AND CLINICAL USE.

BACKGROUND

HMGB4 is HMG2 like, isoform 2, high-mobility group box 4. This gene can be found on Chromosome 1. HMGB4 contains two HMG-box regions, which is found in a variety of eukaryotic chromosomal proteins and transcription. HMGB proteins are phosphorylated to various extents reveals that the existence of differentially modified forms increases the number of distinct HMGB protein variants in plant chromatin that may be adapted to certain functions.

REFERENCE

Phosphorylation of maize and Arabidopsis HMGB proteins by protein kinase CK2alpha. Stemmer C, Leeming DJ, Franssen L, Grimm R, Grasser KD. Institute of Life Sciences, Aalborg University, Sohngaardsholmsvej 49, DK-9000 Aalborg, Denmark.