

# Monoclonal Antibody to CIB1

Cat. #: Mab-606081

## Description:

CIB1(also designated calcium and integrin binding 1 or calmyrin),with 191-amino acid protein(about 21kDa), belongs to the calcium-binding protein family.CIB1 is known to interact with DNA-dependent protein kinase and may play a role in kinase-phosphatase regulation of DNA end joining.CIB1 is an EF-hand-containing protein that binds multiple effector proteins, including the platelet alpha(IIb)beta(3) integrin and several serine/threonine kinases and potentially modulates their function.CIB1 regulates platelet aggregation in hemostasis through a specific interaction with the alpha(IIb) cytoplasmic domain of platelet integrin alpha(IIb)beta(3). CIB1 is also ubiquitously expressed activating and inhibiting protein ligand of the InsP3R.

## Immunogen/Specificity:

Ni-NTA purified truncated recombinant CIB1 expressed in E. Coli strain BL21 (DE3)

## Applications

Western Blot: 1: 500- 1: 2,000

IHC(P): 1: 500- 1: 2,000

IHC(F): 1: 500- 1: 2,000

ELISA: Propose dilution 1: 10,000.

Determining optimal working dilutions by titration test.

## References

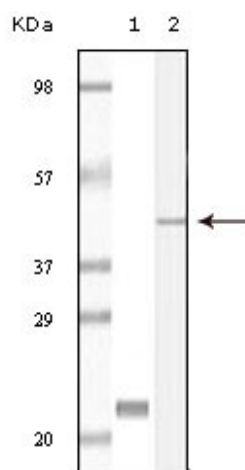
1. Holly R. Gentry,Alex U. Singer, Laurie Betts  
J. Biol. Chem., Mar 2005; 280: 8407 - 8415.
2. Carl White, Jun Yang, Mervyn J. Monteiro  
J. Biol. Chem., Jul 2006; 281: 20825 - 20833
3. Aaron P. Yamniuk, Hiroaki Ishida, Hans J. Vogel  
J. Biol. Chem., Jul 2006; 10.1074/jbc.M603963200.

Clone Number: 5A1F5E12, 5A1H7E12

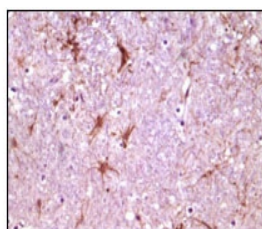
Isotype:

Species: Human

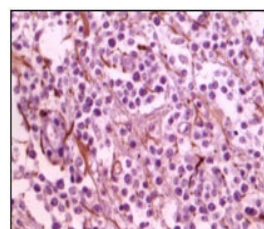
Storage and Stability: at -20oC



**Figure 1:** Western blot analysis using anti-Human CIB1 monoclonal antibody against truncated CIB1 recombinant protein(1) and A431 cell lysate(2).



Human thalamus tissue



Human glioma tissue

**Figure 2:** Immunohistochemical analysis of paraffin-embedded Human thalamus tissue and glioma tissue, showing membrane localization using CIB1 antibody with DAB staining.