

# Monoclonal Antibody to SNCG (breast cancer-specific protein 1)

Cat. #: Mab-606071

## Description:

SNCG(also designated gamma-synuclein or breast cancer-specific protein 1),with 127-amino acid protein(about 14kDa), belongs to the synuclein family, which also includes alpha- and beta- synuclein. Three synucleins are located in the neuronal cytosol and enriched in presynaptic terminals,while SNCG is also expressed in many other non-neuronal tissues. SNCG is abnormally expressed in a high percentage of tumor tissues of diversified cancer types, including liver, esophagus, colon, gastric, lung, prostate, cervical, and breast cancer, but rarely expressed in tumor-matched nonneoplastic adjacent tissues. High levels of SNCG have been identified in advanced breast carcinomas suggesting a correlation between overexpression of SNCG and breast tumor development.

## Immunogen/Specificity:

Ni-NTA purified truncated recombinant SNCG expressed in E. Coli strain BL21 (DE3)

## Applications :

Western Blot: 1: 500- 1: 2,000

IHC(P): 1: 500- 1: 2,000

IHC(F): 1: 500- 1: 2,000

ELISA: Propose dilution 1: 10,000.

Determining optimal working dilutions by titration test.

## Formulation

Antibodies are purified by protein A affinity chromatography.

## References

1. Haiyan Liu, Wei Liu, Yinwei Wu

Cancer Res. 2005 Sep 1;65(17):7635-43

2. Irina Surgucheva , Belinda McMahon , Andrei Surguchov

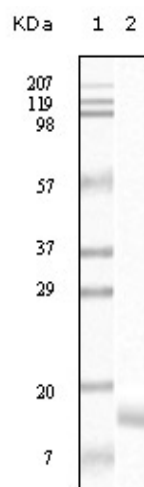
Cell Motil Cytoskeleton. 2006 May 26

Clone Number: 1H10D2

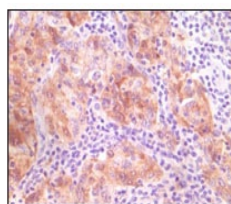
Isotype: IgG1

Species: Human

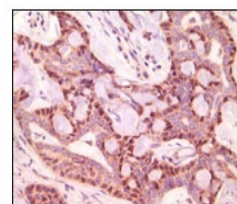
Storage and Stability: at -20oC



**Figure 1:** Western blot analysis using anti- human SNCG monoclonal antibody against truncated SNCG recombinant protein.



Human ovary carcinoma



Human breast carcinoma

**Figure 2:** Immunohistochemical analysis of paraffin-embedded human ovary carcinoma and breast carcinoma tissue, showing cytoplasmic (ovary carcinoma) and cytoplasmic & nuclear (breast carcinoma) localization using SNCG antibody with DAB staining.