



Category: Monoclonal Antibodies
Product Name: Mouse Monoclonal Antibody to KRT19

Catalog Number: MAB-606030249

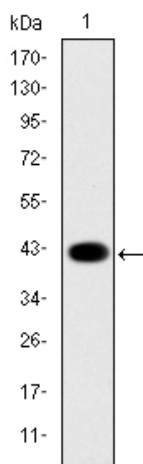


Figure 1: Western blot analysis using KRT19 mAb against human KRT19 (AA: 115-269) recombinant protein. (Expected MW is 43.1 kDa)

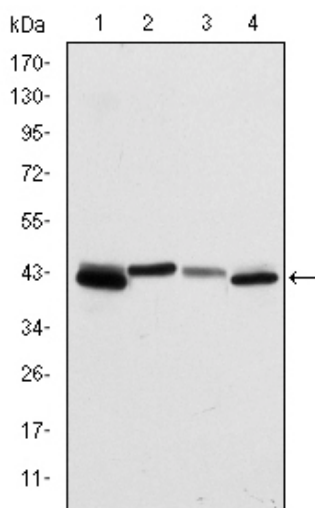


Figure 2: Western blot analysis using KRT19 mouse mAb against T47D (1), MCF-7 (2), HepG2 (3) and SW620 (4) cell lysate.

Lot#:
Clone#: 4E8
Host and isotype: Mouse IgG1
Size: 0.1ml
MW: 41kDa
Aliases: K19; CK19; K1CS;
MGC15366
Entrez Gene: 3880
Species reactivity: Human

Description The protein encoded by this gene is a member of the keratin family. The keratins are intermediate filament proteins responsible for the structural integrity of epithelial cells and are subdivided into cytokeratins and hair keratins. The type I cytokeratins consist of acidic proteins which are arranged in pairs of heterotypic keratin chains. Unlike its related family members, this smallest known acidic cytokeratin is not paired with a basic cytokeratin in epithelial cells. It is specifically expressed in the periderm, the transiently superficial layer that envelopes the developing epidermis. The type I cytokeratins are clustered in a region of chromosome 17q12-q21.

Immunogen Purified recombinant fragment of human KRT19 expressed in E. Coli.

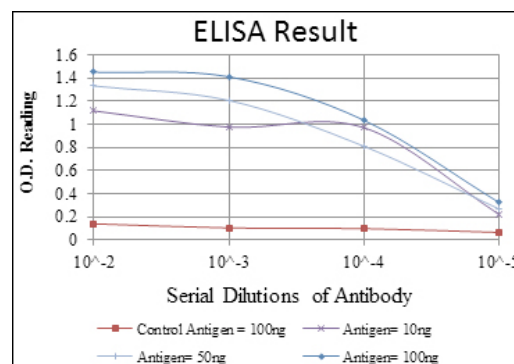
Application Western Blotting: 1/500 - 1/2000.
Immunohistochemistry: 1/200 - 1/1000.
Immunofluorescence: 1/200 - 1/1000.
ELISA: Propose dilution 1/10000.
Not yet tested in other applications.
Determining optimal working dilutions by titration test.

Formulation Ascitic fluid containing 0.03% sodium azide.

Storage Store at 4°C, for long term storage, store at -20°C.

Related product

References 1. Exp Cell Res. 2009 Jul 1;315(11):1964-74.
2. Acta Cytol. 2008 Sep-Oct;52(5):541-8.



For Research Use Only

Contact: Antagene, Inc. | Tel: 1 (866) 964-2589 | Fax: 1 (888) 225-1868 | Email: Info@antageneinc.com