



Category: Monoclonal Antibodies

Product Name: Mouse Monoclonal Antibody to LMNA

Catalog Number: MAB-606030247

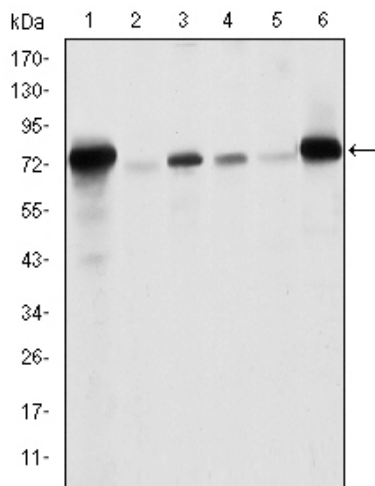


Figure 1: Western blot analysis using LMNA mAb against recombinant protein.

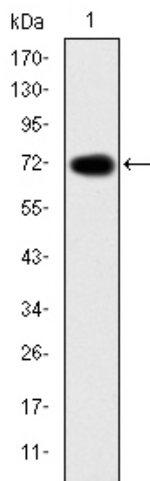


Figure 2: Western blot analysis using LMNA mouse mAb against Raw264.7 (1), PC-12 (2), THP-1 (3), A431 (4), MCF-7 (5) and Jurkat (6) cell lysate.

Lot#:

Clone#: 4E7

Host and isotype: Mouse IgG1

Size: 0.1ml

MW: 74kDa

Aliases: FPL; IDC; LFP; CDDC;

EMD2; FPLD; HGPS; LDP1;

LMN1; LMNC; PRO1; CDCD1;

CMD1A; FPLD2; LMNL1;

CMT2B1

Entrez Gene: 4000

Description The nuclear lamina consists of a two-dimensional matrix of proteins located next to the inner nuclear membrane. The lamin family of proteins make up the matrix and are highly conserved in evolution. During mitosis, the lamina matrix is reversibly disassembled as the lamin proteins are phosphorylated. Lamin proteins are thought to be involved in nuclear stability, chromatin structure and gene expression. Vertebrate lamins consist of two types, A and B. Through alternate splicing, this gene encodes three type A lamin isoforms. Mutations in this gene lead to several diseases: Emery-Dreifuss muscular dystrophy, familial partial lipodystrophy, limb girdle muscular dystrophy, dilated cardiomyopathy, Charcot-Marie-Tooth disease, and Hutchinson-Gilford progeria syndrome.

Immunogen Purified recombinant fragment of human LMNA expressed in E. Coli.

Application Western Blotting: 1/500 - 1/2000.

Immunohistochemistry: 1/200 - 1/1000.

ELISA: Propose dilution 1/10000.

Not yet tested in other applications.

Determining optimal working dilutions by titration test.

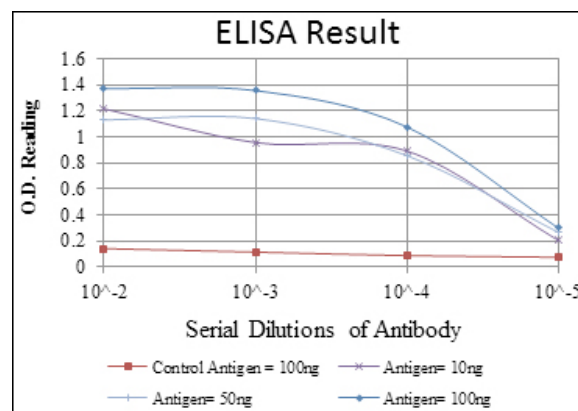
Formulation Ascitic fluid containing 0.03% sodium azide.

Storage Store at 4°C, for long term storage, store at -20°C.

Related product

References 1. Muscle Nerve. 2010 Jan;41(1):85-91.

2. Endocrine. 2009 Dec;36(3):518-23.



For Research Use Only