



Category: Monoclonal Antibodies
Product Name: Mouse Monoclonal Antibody to GCK

Catalog Number: MAB-606030243

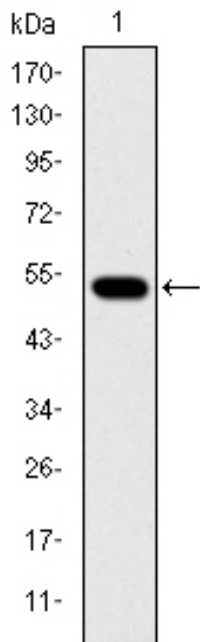


Figure 1: Western blot analysis using GCK mAb against recombinant protein.

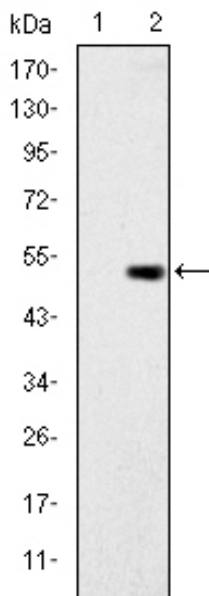


Figure 2: Western blot analysis using GCK mAb against HEK293 (1) and GCK-hIgGfC transfected HEK293 (2) cell lysate.

Lot#:
Clone#: 4G6
Host and isotype: Mouse IgG1
Size: 0.1ml
MW: 52kDa
Aliases: GK; GLK; HK4; HHF3;
HKIV; HXKP; LGLK; MODY2;
FGQTL3
Entrez Gene: 2645
Species reactivity: Human

Description Hexokinases phosphorylate glucose to produce glucose-6-phosphate, the first step in most glucose metabolism pathways. Alternative splicing of this gene results in three tissue-specific forms of glucokinase, one found in pancreatic islet beta cells and two found in liver. The protein localizes to the outer membrane of mitochondria. In contrast to other forms of hexokinase, this enzyme is not inhibited by its product glucose-6-phosphate but remains active while glucose is abundant. Mutations in this gene have been associated with non-insulin dependent diabetes mellitus (NIDDM), maturity onset diabetes of the young, type 2 (MODY2) and persistent hyperinsulinemic hypoglycemia of infancy (PHHI).

Immunogen Purified recombinant fragment of human GCK expressed in E. Coli.

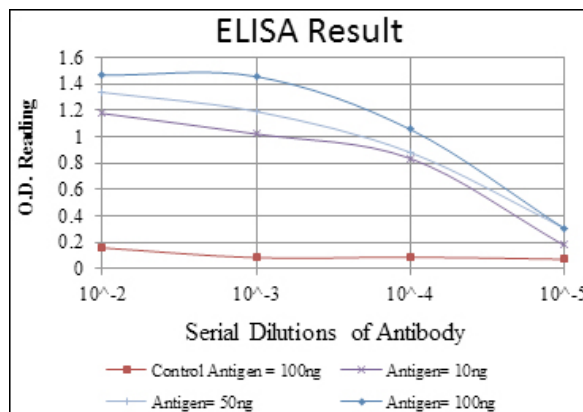
Application Western Blotting: 1/500 - 1/2000.
ELISA: Propose dilution 1/10000.
Not yet tested in other applications.
Determining optimal working dilutions by titration test.

Formulation Ascitic fluid containing 0.03% sodium azide.

Storage Store at 4°C, for long term storage, store at -20°C.

Related product

References 1. Mol Endocrinol. 2009 Dec;23(12):1983-9.
2. Int J Mol Med. 2009 Aug;24(2):233-46.



For Research Use Only

Contact: Antagene, Inc. | Tel: 1 (866) 964-2589 | Fax: 1 (888) 225-1868 | Email: Info@antageneinc.com