



Category: Monoclonal Antibodies Cat. #: MAB-606030239
Product Name: Mouse Monoclonal Antibody to CD15

IHC-P (paraffin)

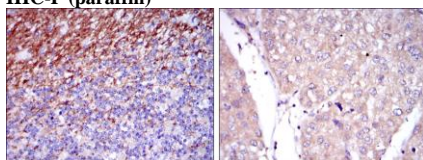
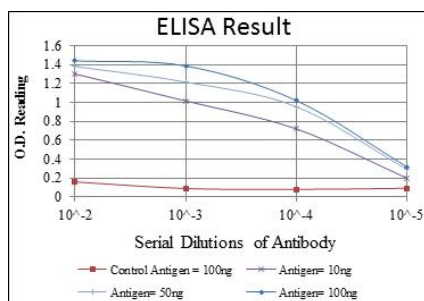


Figure 1: Immunohistochemical analysis of paraffin-embedded human cerebellum tissues (left) and human liver cancer tissues (right) using CD15 mouse mAb with DAB staining.



ICC

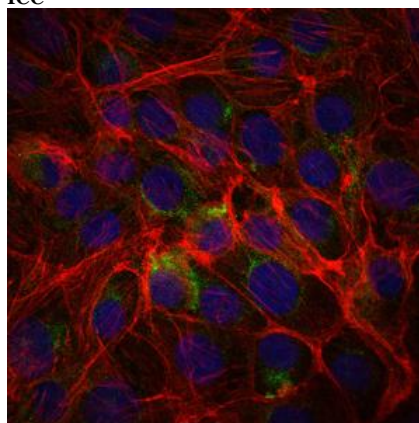


Figure 2: Immunofluorescence analysis of PC-2 cells using CD15 mouse mAb (green). Blue: DRAQ5 fluorescent DNA dye. Red: Actin filaments have been labeled with Alexa Fluor-555 phalloidin.

Lot#:

Clone#: 4E10

Host and isotype: Mouse IgG1

Size: 0.1ml

MW: 59kDa

Aliases: LeX; CD15; ELFT; FCT3; FUTIV; SSEA-1; FUC-TIV

Entrez Gene: 2526

Species reactivity: Human

Description

The product of this gene transfers fucose to N-acetyllactosamine polysaccharides to generate fucosylated carbohydrate structures. It catalyzes the synthesis of the non-sialylated antigen, Lewis x (CD15).

Immunogen

Synthesized peptide of human CD15.

Applications

Immunohistochemistry: 1/200 - 1/1000.

Immunofluorescence: 1/200 - 1/1000.

ELISA: Propose dilution 1/10000.

Not yet tested in other applications.

Determining optimal working dilutions by titration test.

Formulation

Ascitic fluid containing 0.03% sodium azide.

Storage

Store at 4°C, for long term storage, store at -20°C.

Related product

References

1. Cancer Cell. 2009 Feb 3;15(2):135-47.
2. Biochim Biophys Acta. 2008 Feb;1783(2):287-96.

For Research Use Only

Contact: Antagene, Inc. | Tel: 1 (866) 964-2589 | Fax: 1 (888) 225-1868 | Email:Info@antageneinc.com