



Category: Monoclonal Antibodies
Product Name: Mouse Monoclonal Antibody to MMP1

Catalog Number: MAB-606030236

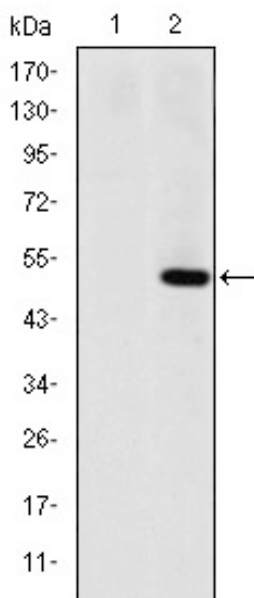


Figure 1: Western blot analysis using MMP1 mAb against HEK293 (1) and MMP1-hIgGfC transfected HEK293 (2) cell lysate.

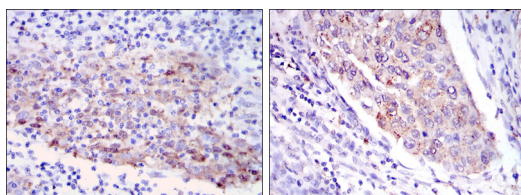


Figure 2: Immunohistochemical analysis of paraffin-embedded human cervical cancer tissues (left) and human kidney cancer tissues (right) using MMP1 mouse mAb with DAB staining.

Lot#:
Clone#: 6A5
Host and isotype: Mouse IgG1
Size: 0.1ml
MW: 54kDa
Aliases: CLG; CLGN
Entrez Gene: 4312
Species reactivity: Human

Description Proteins of the matrix metalloproteinase (MMP) family are involved in the breakdown of extracellular matrix in normal physiological processes, such as embryonic development, reproduction, and tissue remodeling, as well as in disease processes, such as arthritis and metastasis. Most MMP's are secreted as inactive proproteins which are activated when cleaved by extracellular proteinases. This gene encodes a secreted enzyme which breaks down the interstitial collagens, types I, II, and III. The gene is part of a cluster of MMP genes which localize to chromosome 11q22.3. Alternative splicing results in multiple transcript variants.

Immunogen Purified recombinant fragment of human MMP1 expressed in E. Coli.

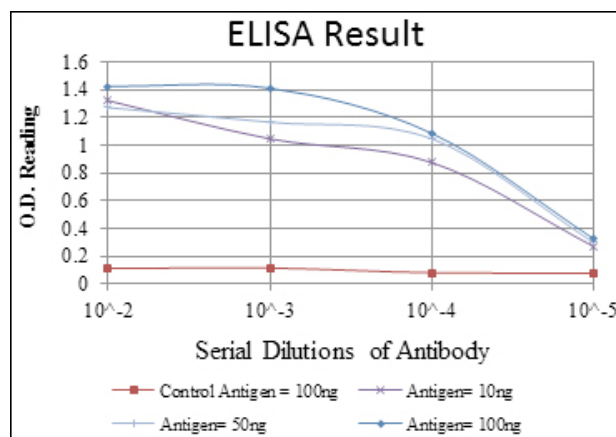
Application Western Blotting: 1/500 - 1/2000.
Immunohistochemistry: 1/200 - 1/1000.
Immunofluorescence: 1/200 - 1/1000.
Flow cytometry: 1/200 - 1/400.
ELISA: Propose dilution 1/10000.
Not yet tested in other applications.
Determining optimal working dilutions by titration test.

Formulation Ascitic fluid containing 0.03% sodium azide.

Storage Store at 4°C, for long term storage, store at -20°C.

Related product References

1. Arthritis Res Ther. 2009;11(6):R169.
2. FEMS Microbiol Lett. 2009 Oct;299(2):214-22.



For Research Use Only