



Category: Monoclonal Antibodies Cat. #: MAB-606030235
Product Name: Mouse Monoclonal Antibody to ACTA2

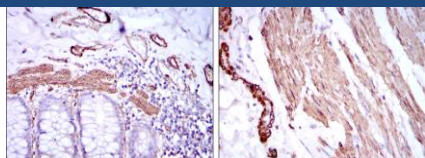


Figure 2: Immunohistochemical analysis of paraffin-embedded human duodenum tissues (left) and human esophagus tissues (right) using ACTA2 mouse mAb with DAB staining.

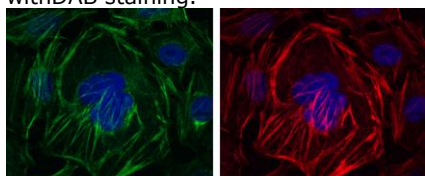


Figure 3: Immunofluorescence analysis of HepG2 cells using ACTA2 mouse mAb (green). Red: Actin filaments have been labeled with Alexa Fluor-555 phalloidin. Blue: DRAQ5 fluorescent DNA dye.

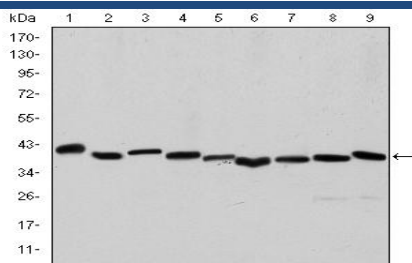
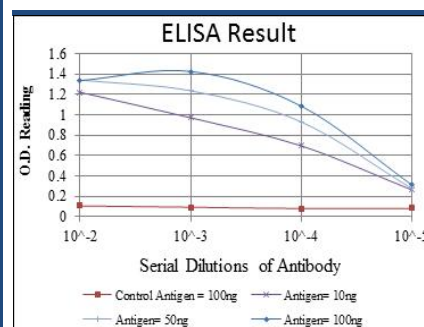


Figure 1: Western blot analysis using ACTA2 mouse mAb against Hela (1), A431 (2), Jurkat (3), K562 (4), HEK293 (5), HepG2 (6), NIH/3T3 (7), PC-12 (8) and Cos7 (9) cell lysate.

Lot:
Clone #:
Host & Isotype: Mouse IgG1
Size: 0.1ml
MW: 42KDa Aliases: AA76; ACTSA; A-Smooth Muscle Actin.
Entrez Gene: 59 Species Reactivity: Human; Rat; Monkey



Description

The protein encoded by this gene belongs to the actin family of proteins, which are highly conserved proteins that play a role in cell motility, structure and integrity. Alpha, beta and gamma actin isoforms have been identified, with alpha actins being a major constituent of the contractile apparatus, while beta and gamma actins are involved in the regulation of cell motility. This actin is an alpha actin that is found in skeletal muscle. Defects in this gene cause aortic aneurysm familial thoracic type 6. Multiple alternatively spliced variants, encoding the same protein, have been identified.

Immunogen

Synthesized peptide of human ACTA2.

Applications

Western Blotting: 1/500 - 1/2000.

Immunohistochemistry: 1/200 - 1/1000.

Immunofluorescence: 1/200 - 1/1000.

Flow cytometry: 1/200 - 1/400.

ELISA: Propose dilution 1/10000.

Not yet tested in other applications.

Determining optimal working dilutions by titration test.

Formulation

Ascitic fluid containing 0.03% sodium azide.

Storage

Store at 4°C, for long term storage, store at -20°C.

Related product

References

1. J Hum Genet. 2009 Nov;54(11):687-8.
2. Hum Mutat. 2009 Oct;30(10):1406-11.

For Research Use Only

Contact: Antagene, Inc. | Tel: 1 (866) 964-2589 | Fax: 1 (888) 225-1868 | Email: Info@antageneinc.com