



**Category:** Monoclonal Antibodies  
**Product Name:** Mouse Monoclonal Antibody to CRKL

**Catalog Number:** MAB-606030231

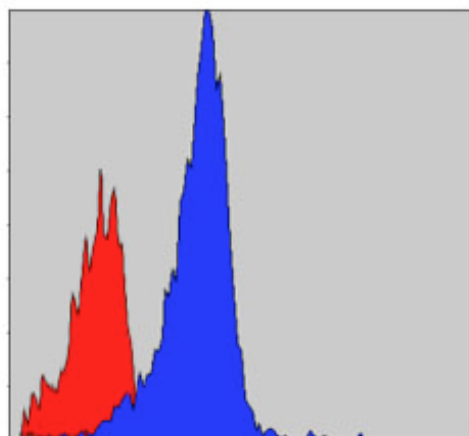
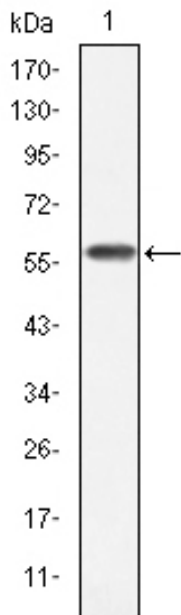


Figure 2: Flow cytometric analysis of NIH/3T3 cells using CRKL mouse mAb (blue) and negative control (red).

Lot#:  
Clone#: 5E12  
Host and isotype: Mouse IgG1  
Size: 0.1ml  
MW: 39kDa  
Aliases: CRKL  
Entrez Gene: 1399  
Species reactivity: Human

Figure 1: Western blot analysis using CRKL mAb against human CRKL (AA: 100-303) recombinant protein. (Expected MW is 47.8 kDa)

**Description** This gene encodes a protein kinase containing SH2 and SH3 (src homology) domains which has been shown to activate the RAS and JUN kinase signaling pathways and transform fibroblasts in a RAS-dependent fashion. It is a substrate of the BCR-ABL tyrosine kinase, plays a role in fibroblast transformation by BCR-ABL, and may be oncogenic.

**Immunogen** Purified recombinant fragment of human CRKL expressed in E. Coli.

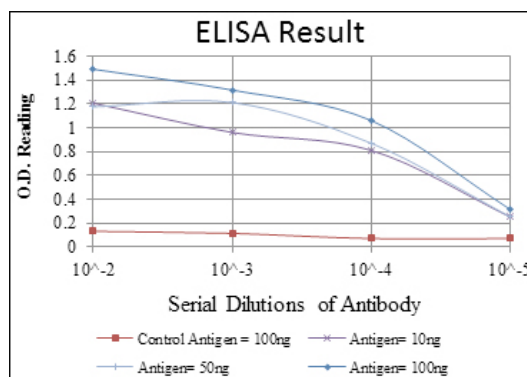
**Application** Western Blotting: 1/500 - 1/2000.  
Flow cytometry: 1/200 - 1/400.  
ELISA: Propose dilution 1/10000.  
Not yet tested in other applications.  
Determining optimal working dilutions by titration test.

**Formulation** Ascitic fluid containing 0.03% sodium azide.

**Storage** Store at 4°C, for long term storage, store at -20°C.

**Related product**

**References** 1. Mol Cell Biol. 2009 Jun;29(11):3076-87.  
2. Cell. 2009 Jul 23;138(2):389-403.



**For Research Use Only**