



Category: Monoclonal Antibodies

Product Name: Mouse Monoclonal Antibody to c-Rel

Catalog Number: MAB-606030223

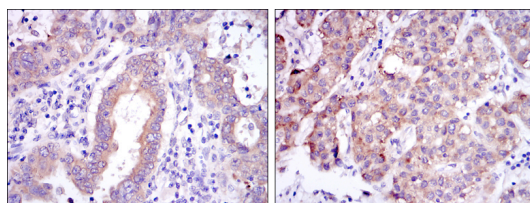
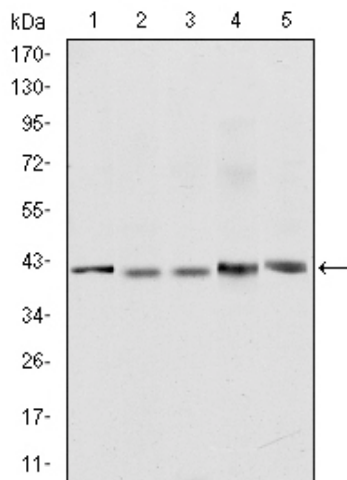


Figure 2: Immunohistochemical analysis of paraffin-embedded endometrial cancer tissues (left) and liver cancer tissues (right) using c-Rel mouse mAb with DAB staining.

Lot#:
Clone#: 1E7
Host and isotype: Mouse IgG1
Size: 0.1ml
MW: 78kDa
Aliases: Rel; c-Rel
Entrez Gene: 6606
Species reactivity: Hum

Figure 1: Western blot analysis using c-Rel mouse mAb against Jurkat (1), NIH/3T3 (2), HeLa (3), HEK293 (4) and RAJI (5) cell lysate.

Description The REL gene encodes c-Rel, a transcription factor that is a member of the Rel/NFkB family, which also includes RELA (MIM 164014), RELB (604758), NFkB1 (MIM 164011), and NFkB2 (MIM 164012). These proteins are related through a highly conserved N-terminal region termed the 'Rel domain,' which is responsible for DNA binding, dimerization, nuclear localization, and binding to the NFkB inhibitor.

Immunogen Purified recombinant fragment of human c-Rel expressed in E. Coli.

Application Western Blotting: 1/500 - 1/2000.

Immunohistochemistry: 1/200 - 1/1000.

Immunofluorescence: 1/200 - 1/1000.

ELISA: Propose dilution 1/10000.

Not yet tested in other applications.

Determining optimal working dilutions by titration test.

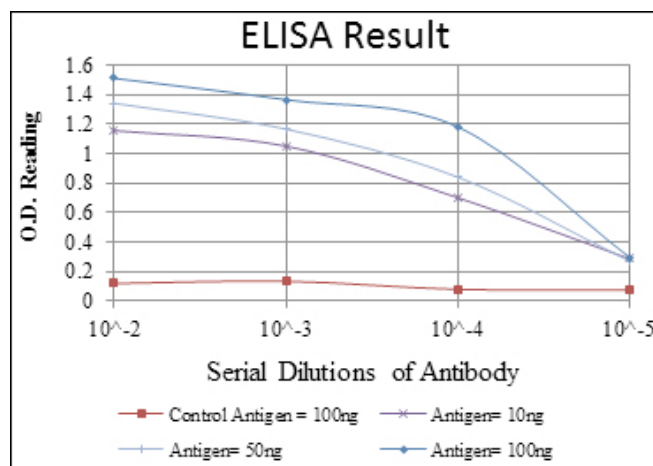
Formulation Ascitic fluid containing 0.03% sodium azide.

Storage Store at 4°C, for long term storage, store at -20°C.

Related product

References 1. Gut. 2009 Aug;58(8):1078-83.

2. Gene Expr. 2008;14(4):195-205.



For Research Use Only