



Category: Monoclonal Antibodies
Product Name: Mouse Monoclonal Antibody to SMN1

Catalog Number: MAB-606030222

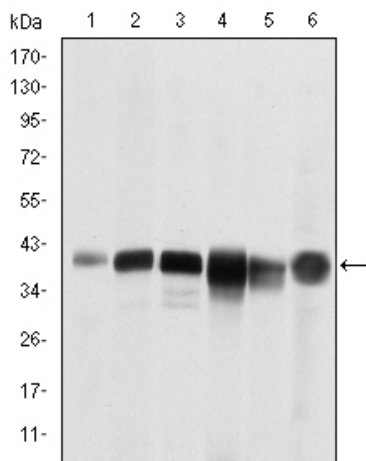


Figure 1: Western blot analysis using SMN1 mouse mAb against RAJI (1), Cos7 (2), Jurkat (3), K562 (4), HepG2 (5) and HepG2 cell lysate (6).

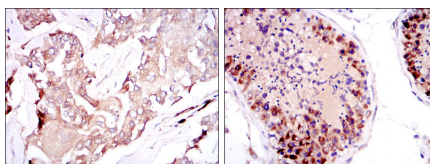


Figure 2: Immunohistochemical analysis of paraffin-embedded breast cancer tissues (left) and testis tissues (right) using SMN1 mouse mAb with DAB staining.

Lot#:
Clone#: 5H1
Host and isotype: Mouse IgG1
Size: 0.1ml
MW: 39kDa
Aliases: SMA; SMN; SMA1; SMA2; SMA3; SMA4; SMA@; SMN2; SMNT; BCD541; T-BCD541
Entrez Gene: 6606
Species reactivity: Human; Monkey

Description This gene is part of a 500 kb inverted duplication on chromosome 5q13. This duplicated region contains at least four genes and repetitive elements which make it prone to rearrangements and deletions. The repetitiveness and complexity of the sequence have also caused difficulty in determining the organization of this genomic region. The telomeric and centromeric copies of this gene are nearly identical and encode the same protein.

Immunogen Purified recombinant fragment of human SMN1 expressed in E. Coli.

Application Western Blotting: 1/500 - 1/2000.

Immunohistochemistry: 1/200 - 1/1000.

Immunofluorescence: 1/200 - 1/1000.

ELISA: Propose dilution 1/10000.

Not yet tested in other applications.

Determining optimal working dilutions by titration test.

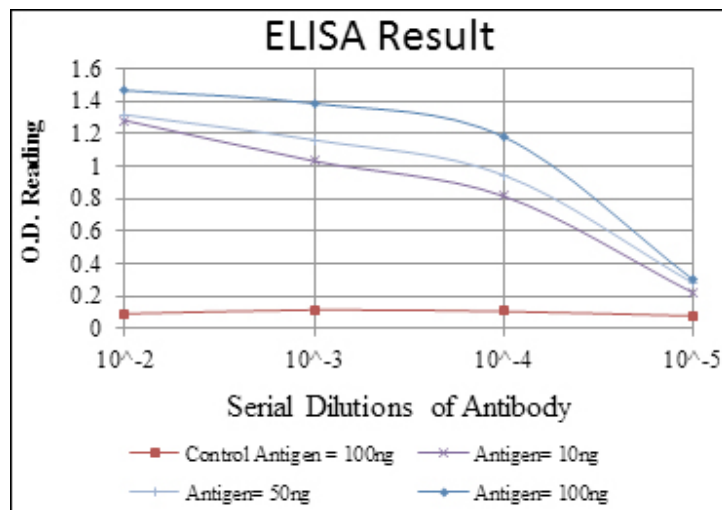
Formulation Aseptic fluid containing 0.03% sodium azide.

Storage Store at 4°C, for long term storage, store at -20°C.

Related product References

1. J Med Genet. 2009 Sep;46(9):641-4.

2. RNA. 2009 Apr;15(4):515-23.



For Research Use Only