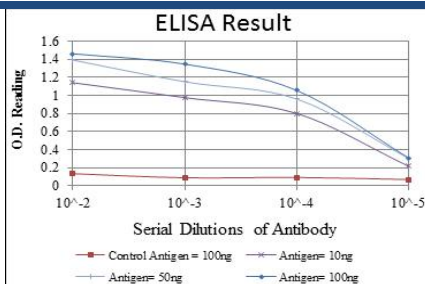




Category: Monoclonal Antibodies Cat. #: MAB-606030221
Product Name: Mouse Monoclonal Antibody to CD 105



Lot#:

Clone#: 3A9

Host and isotype: Mouse IgG1

Size: 0.1ml

MW: 71kDa

Aliases: ENG; END; ORW; HHT1;

ORW1; CD105; FLJ41744

Entrez Gene: 2022

Species reactivity: Human

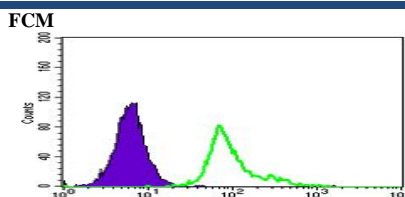


Figure 2: Flow cytometric analysis of HepG2 cells using CD105 mouse mAb (green) and negative control (purple).

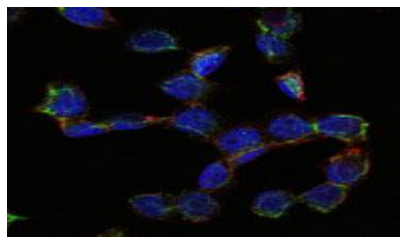


Figure 3: Immunofluorescence analysis of HepG2 cells using CD105 mouse mAb (green). Blue: DRAQ5 fluorescent DNA dye. Red: Actin filaments have been labeled with Alexa Fluor-555

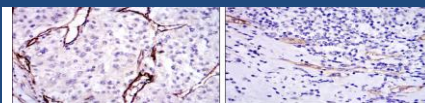


Figure 4: Immunohistochemical analysis of paraffin-embedded kidney cancer tissues (left) and stomach cancer tissues (right) using CD105 mouse mAb with DAB staining.

Western Blotting

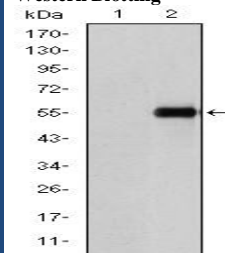


Figure 1: Western blot analysis using CD105 mAb against HEK293 (1) and CD105-hIgGfC transfected HEK293 (2) cell lysate

Description

This gene encodes a homodimeric transmembrane protein which is a major glycoprotein of the vascular endothelium. This protein is a component of the transforming growth factor beta receptor complex and it binds TGF β 1 and TGF β 3 with high affinity. Mutations in this gene cause hereditary hemorrhagic telangiectasia, also known as Osler-Rendu-Weber syndrome 1, an autosomal dominant multisystemic vascular dysplasia.

Immunogen

Purified recombinant fragment of human CD105 expressed in E. Coli.

Applications

Western Blotting: 1/500 - 1/2000.

Immunohistochemistry: 1/200 - 1/1000.

Immunofluorescence: 1/200 - 1/1000.

Flow cytometry: 1/200 - 1/400.

ELISA: Proposed dilution 1/10000.

Not yet tested in other applications.

Determining optimal working dilutions by titration test.

Formulation

Ascitic fluid containing 0.03% sodium azide.

Storage

Store at 4°C, for long term storage, store at -20°C.

Related product

References

1. Int J Cancer. 2009 Feb 1;124(3):664-9.
2. Reprod Sci. 2008 Dec;15(10):1018-26.

For Research Use Only

Contact: Antagene, Inc. | Tel: 1 (866) 964-2589 | Fax: 1 (888) 225-1868 | Email: Info@antageneinc.com