



**Category:** Monoclonal Antibodies  
**Product Name:** Mouse Monoclonal Antibody to SMN1

**Catalog Number:** MAB-606030220

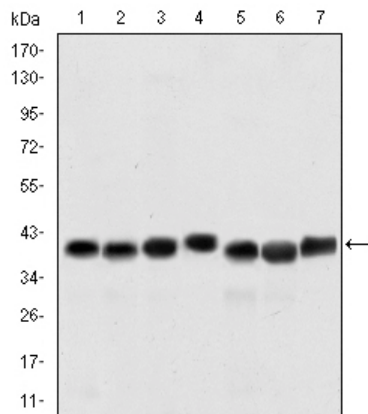


Figure 1: Western blot analysis using SMN1 mouse mAb against HepG2 (1), Hela (2), K562 (3), Jurkat (4), SKBR-3 (5), A431 (6) and Cos7 (7) cell lysate.

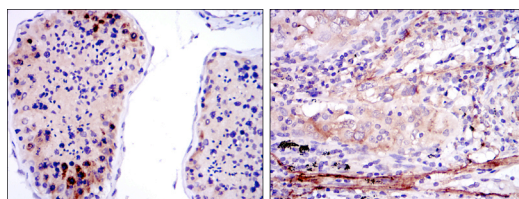


Figure 2: Immunohistochemical analysis of paraffin-embedded testis tissues (left) and lung cancer tissues (right) using SMN1 mouse mAb with DAB staining.

Lot#:  
Clone#: 2F1  
Host and isotype: Mouse IgG1  
Size: 0.1ml  
MW: 39kDa  
Aliases: SMA; SMN; SMA1;  
SMA2; SMA3; SMA4; SMA@;  
SMN2; SMNT; BCD541; T-  
BCD541  
Entrez Gene: 6606  
Species reactivity: Human;  
Monkey

**Description** This gene is part of a 500 kb inverted duplication on chromosome 5q13. This duplicated region contains at least four genes and repetitive elements which make it prone to rearrangements and deletions. The repetitiveness and complexity of the sequence have also caused difficulty in determining the organization of this genomic region. The telomeric and centromeric copies of this gene are nearly identical and encode the same protein.

**Immunogen** Purified recombinant fragment of human SMN1 expressed in E. Coli.

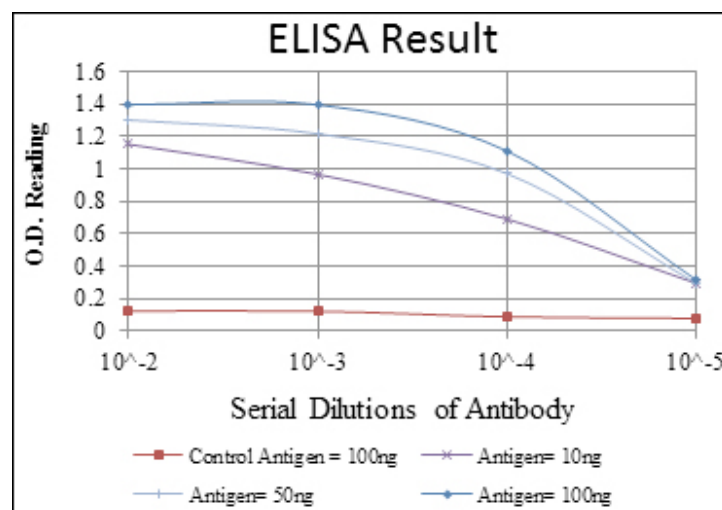
**Application** Western Blotting: 1/500 - 1/2000.  
Immunohistochemistry: 1/200 - 1/1000.  
Flow cytometry: 1/200 - 1/400.  
ELISA: Propose dilution 1/10000.  
Not yet tested in other applications.  
Determining optimal working dilutions by titration test.

**Formulation** Ascitic fluid containing 0.03% sodium azide. ]

**Storage** Store at 4°C, for long term storage, store at -20°C.

#### Related product References

1. J Med Genet. 2009 Sep;46(9):641-4.
2. RNA. 2009 Apr;15(4):515-23.



**For Research Use Only**