



**Category: Monoclonal Antibodies Cat. #: MAB-606030214**  
**Product Name: Mouse Monoclonal Antibody to ApoB**

#### Western Blotting

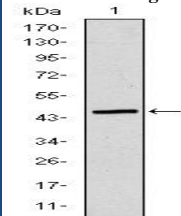


Figure 1: Western blot analysis using ApoB mAb against human ApoB (AA: 3900-4110) recombinant protein. (Expected MW is 515.6 kDa)

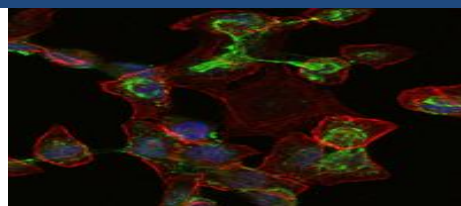
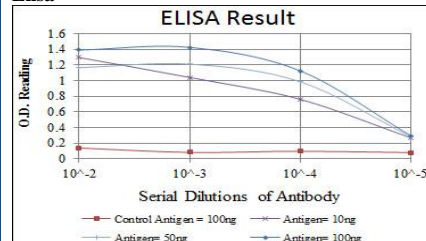


Figure 2: Immunofluorescence analysis of HepG2 cells using ApoB mouse mAb (green). Blue: DRAQ5 fluorescent DNA dye. Red: Actin filaments have been labeled with Alexa Fluor-555 phalloidin.

Lot#:  
Clone#: 6G6  
Host and isotype: Mouse IgG1  
Size: 0.1ml  
MW: 516kDa  
Aliases: FLDB; LDLQC4  
Entrez Gene: 338  
Species reactivity: Human

#### Elisa



#### FCM

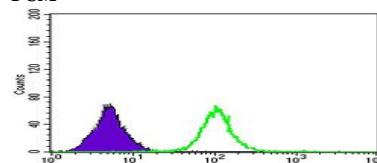


Figure 3: Flow cytometric analysis of serum using ApoB mouse mAb (green) and negative control (purple).

#### Description

This gene product is the main apolipoprotein of chylomicrons and low density lipoproteins. It occurs in plasma as two main isoforms, apoB-48 and apoB-100: the former is synthesized exclusively in the gut and the latter in the liver. The intestinal and the hepatic forms of apoB are encoded by a single gene from a single, very long mRNA. The two isoforms share a common N-terminal sequence. The shorter apoB-48 protein is produced after RNA editing of the apoB-100 transcript at residue 2180 (CAA->UAA), resulting in the creation of a stop codon, and early translation termination. Mutations in this gene or its regulatory region cause hypobetalipoproteinemia, normotriglyceridemic hypobetalipoproteinemia, and hypercholesterolemia due to ligand-defective apoB, diseases affecting plasma cholesterol and apoB levels.

#### Immunogen

Purified recombinant fragment of human ApoB expressed in E. Coli.

#### Applications

Western Blotting: 1/500 - 1/2000.

Immunofluorescence: 1/200 - 1/1000.

Flow cytometry: 1/200 - 1/400.

ELISA: Propose dilution 1/10000.

Not yet tested in other applications.

Determining optimal working dilutions by titration test.

#### Formulation

Ascitic fluid containing 0.03% sodium azide.

#### Storage

Store at 4°C, for long term storage, store at -20°C.

#### Related product

#### References

1. Cell Host Microbe. 2008 Dec 11;4(6):555-66.
2. Atherosclerosis. 2009 Sep;206(1):17-30.

**For Research Use Only**

**Contact: Antagene, Inc. | Tel: 1 (866) 964-2589 | Fax: 1 (888) 225-1868 | Email:Info@antageneinc.com**