



Category: Monoclonal Antibodies
Product Name: Mouse Monoclonal Antibody to Epha10

Catalog Number: MAB-606030208

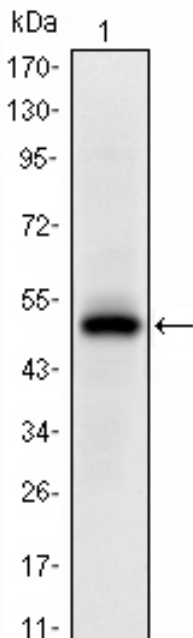


Figure 1: Western blot analysis using Epha10 mAb against human Epha10 (AA: 34-295) recombinant protein. (Expected MW is 109.7 kDa)

Lot#:
Clone#: 2E8
Host and isotype: Mouse IgG2a
Size: 0.1ml
MW: 110kDa
Aliases: FLJ16103; FLJ33655;
MGC43817
Entrez Gene: 284656
Species reactivity: Human

Description Ephrin receptors, the largest subfamily of receptor tyrosine kinases (RTKs), and their ephrin ligands are important mediators of cell-cell communication regulating cell attachment, shape, and mobility in neuronal and epithelial cells (Aasheim et al., 2005 (PubMed 15777695)). Tissue specificity: Mainly expressed in testis.

Immunogen Purified recombinant fragment of human Epha10 expressed in E. Coli.

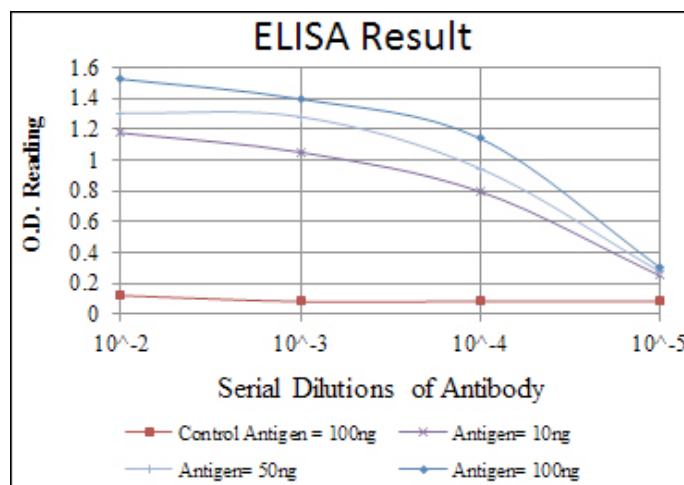
Application Western Blotting: 1/500 - 1/2000.
ELISA: Propose dilution 1/10000.
Not yet tested in other applications.
Determining optimal working dilutions by titration test.

Formulation Ascitic fluid containing 0.03% sodium azide.

Storage Store at 4°C, for long term storage, store at -20°C.

Related product

References 1. Biochem Cell Biol. 2011 Apr;89(2):115-29.
2. Leuk Res. 2009 Mar;33(3):395-406.



For Research Use Only

Contact: Antagene, Inc. | Tel: 1 (866) 964-2589 | Fax: 1 (888) 225-1868 | Email: Info@antageneinc.com