



**Category:** Monoclonal Antibodies  
**Product Name:** Mouse Monoclonal Antibody to PODXL

**Catalog Number:** MAB-606030206

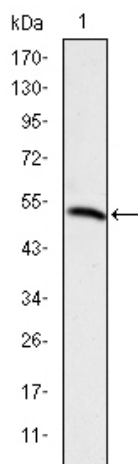


Figure 1: Western blot analysis using PODXL mAb against recombinant protein.

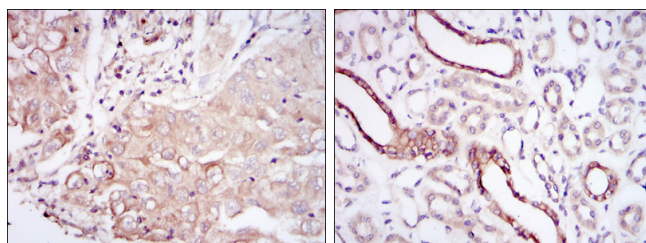


Figure 2: Immunohistochemical analysis of paraffin-embedded lung cancer tissues (left) and kidney tissues (right) using PODXL mouse mAb with DAB staining.

**Lot#:**  
**Clone#:** 5F5  
**Host and isotype:** Mouse IgG1  
**Size:** 0.1ml  
**MW:** 49kDa  
**Aliases:** PC; PCLP; Gp200; PCLP-1; MGC138240  
**Entrez Gene:** 5420  
**Species reactivity:** Human

**Description** This gene encodes a member of the sialomucin protein family. The encoded protein was originally identified as an important component of glomerular podocytes. Podocytes are highly differentiated epithelial cells with interdigitating foot processes covering the outer aspect of the glomerular basement membrane. Other biological activities of the encoded protein include: binding in a membrane protein complex with Na<sup>+</sup>/H<sup>+</sup> exchanger regulatory factor to intracellular cytoskeletal elements, playing a role in hematopoietic cell differentiation, and being expressed in vascular endothelium cells and binding to L-selectin. (provided by RefSeq) Tissue specificity: Glomerular epithelium cell (podocyte)

**Immunogen** Purified recombinant fragment of human PODXL expressed in E. Coli.

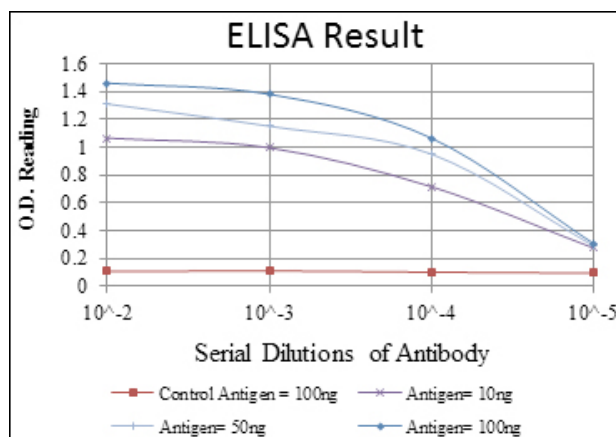
**Application** Western Blotting: 1/500 - 1/2000.  
Immunohistochemistry: 1/200 - 1/1000.  
Flow cytometry: 1/200 - 1/400.  
ELISA: Propose dilution 1/10000.  
Not yet tested in other applications.  
Determining optimal working dilutions by titration test.

**Formulation** Aseptic fluid containing 0.03% sodium azide.

**Storage** Store at 4°C, for long term storage, store at -20°C.

#### Related product References

1. Blood. 2009 Jan 22;113(4):816-26.
2. Am J Physiol Cell Physiol. 2009 Mar;296(3):C505-13.



**For Research Use Only**

**Contact:** Antagene, Inc. | Tel: 1 (866) 964-2589 | Fax: 1 (888) 225-1868 | Email: Info@antageneinc.com