



Category: Monoclonal Antibodies
Product Name: Mouse Monoclonal Antibody to HSP60

Catalog Number: MAB-606030193

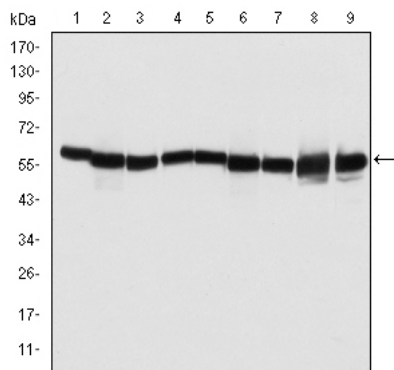


Figure 1: Western blot analysis using HSP60 mouse mAb against T47D (1), HeLa (2), HepG2 (3), A549 (4), Jurkat (5), HEK293 (6), NIH/3T3 (7), PC-12 (8) and Cos7 (9) cell lysate.

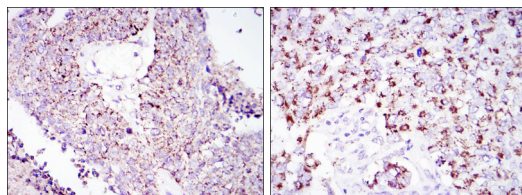


Figure 2: Immunohistochemical analysis of paraffin-embedded lung cancer tissues (left) and kidney cancer tissues (right) using HSP60 mouse mAb with DAB staining.

Lot#:
Clone#: 3G8
Host and isotype: Mouse IgG1
Size: 0.1ml
MW: 61kDa
Aliases: HLD4; CPN60; GROEL; HSP60; HSP65; SPG13; HSP-60; HuCHA60; HSPD1
Entrez Gene: 3329
Species reactivity: Human; Rat; Mouse; Monkey

Description This gene encodes a member of the chaperonin family. The encoded mitochondrial protein may function as a signaling molecule in the innate immune system. This protein is essential for the folding and assembly of newly imported proteins in the mitochondria. This gene is adjacent to a related family member and the region between the 2 genes functions as a bidirectional promoter. Several pseudogenes have been associated with this gene. Two transcript variants encoding the same protein have been identified for this gene. Mutations associated with this gene cause autosomal recessive spastic paraplegia 13. (provided by RefSeq)

Immunogen Purified recombinant fragment of human HSP60 expressed in E. Coli.

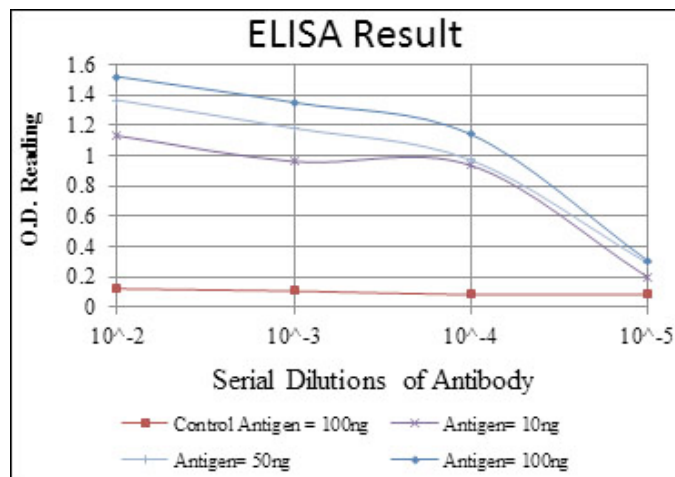
Application Western Blotting: 1/500 - 1/2000.
Immunohistochemistry: 1/200 - 1/1000.
Immunofluorescence: 1/200 - 1/1000.
Flow cytometry: 1/200 - 1/400.
ELISA: Propose dilution 1/10000.
Not yet tested in other applications.
Determining optimal working dilutions by titration test.

Formulation Ascitic fluid containing 0.03% sodium azide.

Storage Store at 4°C, for long term storage, store at -20°C.

Related product

References 1. Clin Exp Rheumatol. 2008 Nov-Dec;26(6):1107-10.
2. APMIS. 2008 Oct;116(10):888-95.



For Research Use Only