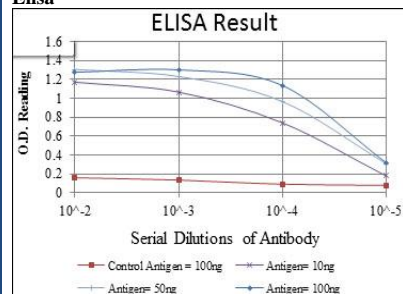




Category: Monoclonal Antibodies Cat. #: MAB-606030185
Product Name: Mouse Monoclonal Antibody to CD 1A

Elisa



Western Blotting

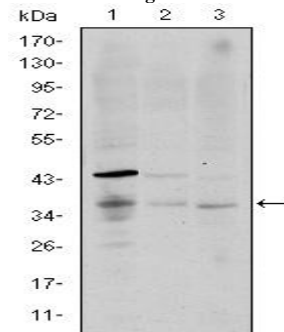


Figure 1: Western blot analysis using CD1A mouse mAb against K562 (1), RAJI (2), and MOLT4 (3) cell lysate.

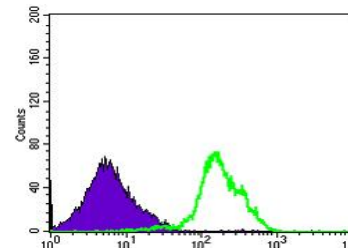


Figure 2: Flow cytometric analysis of RAJI cells using CD1A mouse mAb (green) and negative control (purple).

Clone#	6H3
Host and isotype	Mouse IgG1
Species reactivity	Human
Size	0.1ml
MW	37kDa
Entrez Gene	909

Description

CD1a is a non polymorphic MHC Class 1 related cell surface glycoprotein, expressed in association with Beta 2 microglobulin. CD1a is expressed by cortical thymocytes, Langerhan's cells and by interdigitating cells. CD1a is also expressed by some malignancies of T cell lineage and in histiocytosis X. Tissue specificity: Expressed on cortical thymocytes, epidermal Langerhans cells, dendritic cells, on certain T-cell leukemias, and in various other tissues.

Immunogen

Purified recombinant fragment of human CD1A expressed in E. Coli.

Applications

Western Blotting: 1/500 - 1/2000.

Flow cytometry: 1/200 - 1/400.

ELISA: Propose dilution 1/10000.

Not yet tested in other applications.

Determining optimal working dilutions by titration test.

Formulation

Ascitic fluid containing 0.03% sodium azide.

Storage

Store at 4°C, for long term storage, store at -20°C.

Related product

References

1. J Neuroimmunol. 2008 Dec 15;205(1-2):110-2.
2. Pathol Int. 2008 Mar;58(3):169-73.

For Research Use Only

Contact: Antagene, Inc. | Tel: 1 (866) 964-2589 | Fax: 1 (888) 225-1868 | Email:Info@antageneinc.com