



Category: Monoclonal Antibodies Cat. #: MAB-606030182
Product Name: Mouse Monoclonal Antibody to BECN1

Western Blotting

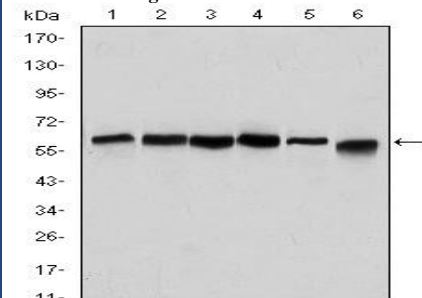
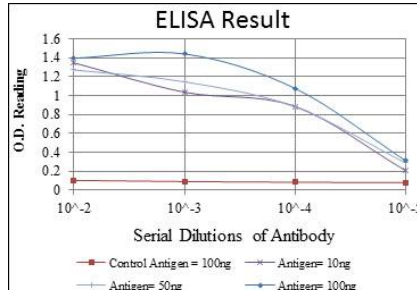


Figure 1: Western blot analysis using BECN1 mouse mAb against HeLa (1), A431 (2), MCF-7 (3), RAJI (4), Jurkat (5) and SKBR-3 (6) cell lysate.

Elisa



Lot#:

Clone#: 2A4

Host and isotype: Mouse IgG1

Size: 0.1ml

MW: 60kDa

Aliases: ATG6; VPS30; beclin1; BECN1

Entrez Gene: 8678

Species reactivity: Human

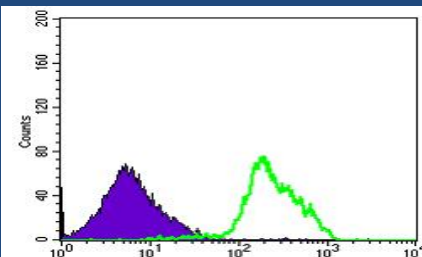


Figure 3: Flow cytometric analysis of RAJI cells using BECN1 mouse mAb (green) and negative control (purple).

IHC-P (paraffin)

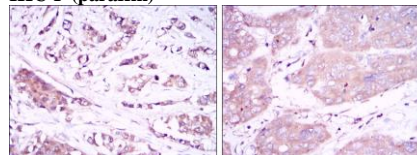


Figure 2: Immunohistochemical analysis of paraffin-embedded breast cancer tissues (left) and liver cancer tissues (right) using BECN1 mouse mAb with DAB staining.

Description

Beclin-1 participates in the regulation of autophagy and has an important role in development, tumorigenesis, and neurodegeneration (Zhong et al., 2009 (PubMed 19270693)).(supplied by OMIM) . Tissue specificity: Ubiquitous.

Immunogen

Purified recombinant fragment of human BECN1 expressed in E. Coli.

Applications

Western Blotting: 1/500 - 1/2000.

Immunohistochemistry: 1/200 - 1/1000.

Flow cytometry: 1/200 - 1/400.

ELISA: Propose dilution 1/10000.

Not yet tested in other applications.

Determining optimal working dilutions by titration test.

Formulation

Ascitic fluid containing 0.03% sodium azide.

Storage

Store at 4°C, for long term storage, store at -20°C.

Related product

References

1. Autophagy. 2008 Oct 1;4(7):947-8.
2. J Clin Invest. 2008 Jun;118(6):2190-9.

For Research Use Only

Contact: Antagene, Inc. | Tel: 1 (866) 964-2589 | Fax: 1 (888) 225-1868 | Email:Info@antageneinc.com