



**Category:** Monoclonal Antibodies  
**Product Name:** Mouse Monoclonal Antibody to CDK1

**Catalog Number:** MAB-606030181

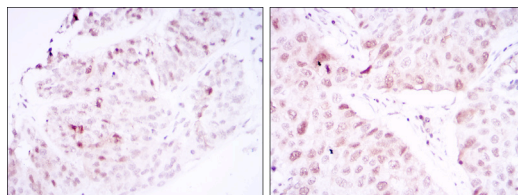
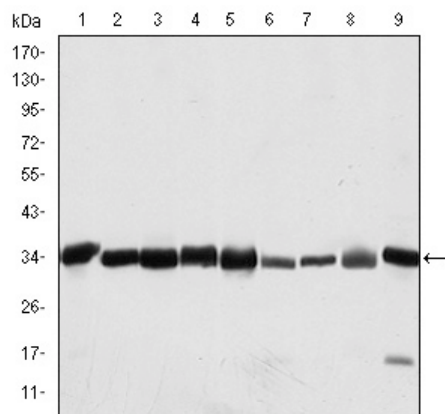


Figure 2: Immunohistochemical analysis of paraffin-embedded ovarian cancer tissues (left) and lung cancer tissues (right) using CDK1 mouse mAb with DAB staining.

**Lot#:**  
**Clone#:** 2G9  
**Host and isotype:** Mouse IgG1  
**Size:** 0.1ml  
**MW:** 34kDa  
**Aliases:** CDC2; CDC28A; P34CDC2; MGC111195; DKFZp686L20222; CDK1  
**Entrez Gene:** 983  
**Species reactivity:** Human; Mouse; Rat; Monkey

Figure 1: Western blot analysis using CDK1 mouse mAb against HeLa (1), Jurkat (2), K562 (3), A431 (4), MCF-7 (5), RAW264.7 (6), NIN/3T3 (7), PC-12 (8), and Cos7 (9) cell lysate.

**Description** The protein encoded by this gene is a member of the Ser/Thr protein kinase family. This protein is a catalytic subunit of the highly conserved protein kinase complex known as M-phase promoting factor (MPF), which is essential for G1/S and G2/M phase transitions of eukaryotic cell cycle. Mitotic cyclins stably associate with this protein and function as regulatory subunits. The kinase activity of this protein is controlled by cyclin accumulation and destruction through the cell cycle. The phosphorylation and dephosphorylation of this protein also play important regulatory roles in cell cycle control.

**Immunogen** Purified recombinant fragment of human CDK1 expressed in E. Coli.

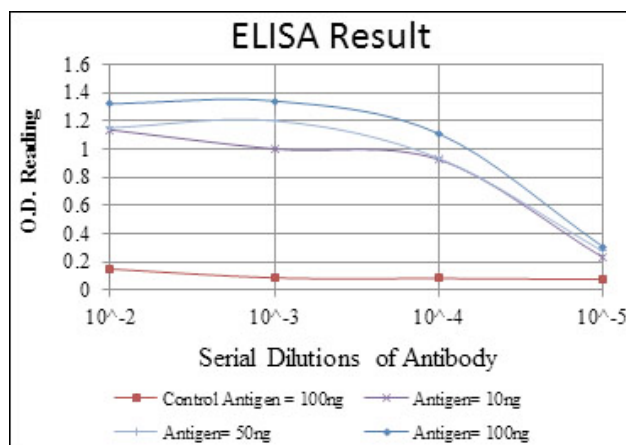
**Application** Western Blotting: 1/500 - 1/2000.  
Immunohistochemistry: 1/200 - 1/1000.  
Immunofluorescence: 1/200 - 1/1000.  
ELISA: Propose dilution 1/10000.  
Not yet tested in other applications.  
Determining optimal working dilutions by titration test.

**Formulation** Ascitic fluid containing 0.03% sodium azide.

**Storage** Store at 4°C, for long term storage, store at -20°C.

**Related product**

**References** 1. Mol Cell. 2008 May 23;30(4):447-59.



**For Research Use Only**