



Category: Monoclonal Antibodies
Product Name: Mouse Monoclonal Antibody to CEA

Catalog Number: MAB-606030157

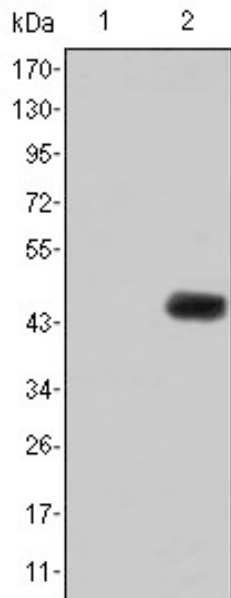


Figure 1: Western blot analysis using CEA mAb against HEK293 (1) and CEA-hIgGFc transfected HEK293 (2) cell lysate.

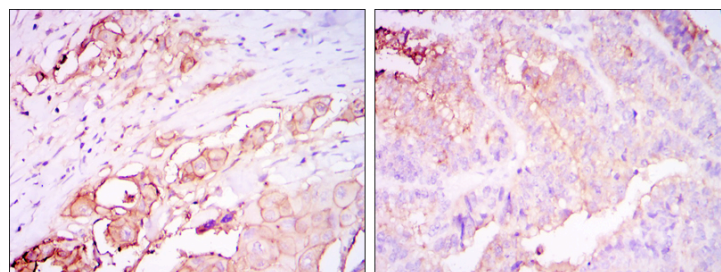


Figure 2: Immunohistochemical analysis of paraffin-embedded rectum cancer tissues (left) and stomach cancer tissues (right) using CEA mouse mAb with DAB staining.

Lot#:
Clone#: 1C7
Host and isotype: Mouse IgG1
Size: 0.1ml
MW: 77kDa
Aliases: CEA; CD66e;
DKFZp781M2392; CEACAM5
Entrez Gene: 1048
Species reactivity: Human

Description Carcino Embryonic Antigen (CEA) is synthesised during development in the fetal gut, and is re-expressed in increased amounts in intestinal carcinomas and several other tumors. Antibodies to CEA are useful in identifying the origin of various metastatic adenocarcinomas and in distinguishing pulmonary adenocarcinomas (60 to 70% are CEA+) from pleural mesotheliomas (rarely or weakly CEA+). The carcinoembryonic antigen (CEA) is a member of a large family of glycoproteins and a useful tumor marker for adenocarcinoma. Tissue specificity: Found in adenocarcinomas of endodermally derived digestive system epithelium and fetal colon.

Immunogen Purified recombinant fragment of human CEA expressed in E. Coli.

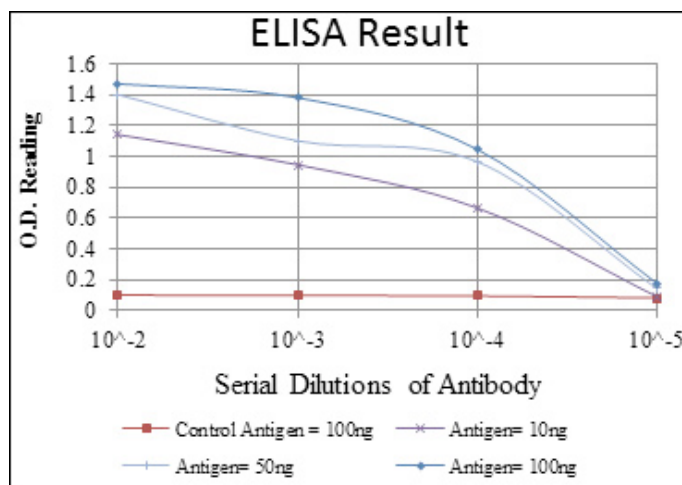
Application Western Blotting: 1/500 - 1/2000.
Immunohistochemistry: 1/200 - 1/1000.
ELISA: Propose dilution 1/10000.
Not yet tested in other applications.
Determining optimal working dilutions by titration test.

Formulation Ascitic fluid containing 0.03% sodium azide.

Storage Store at 4°C, for long term storage, store at -20°C.

Related product

References 1. Scand J Clin Lab Invest. 2008;68(8):703-13.
2. Xi Bao Yu Fen Zi Mian Yi Xue Za Zhi. 2008 Apr;24(4):370-2. Chinese.



For Research Use Only