



**Category:** Monoclonal Antibodies

**Product Name:** Mouse Monoclonal Antibody to CTCF

**Catalog Number:** MAB-606030149

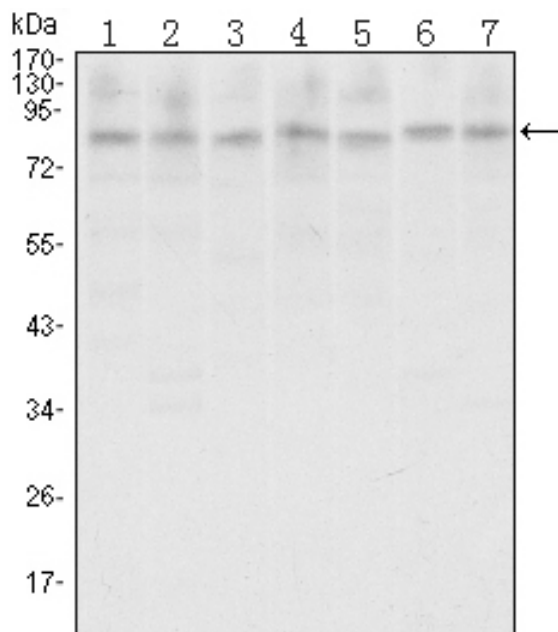


Figure 1: Western blot analysis using CTCF mouse mAb against A31 (1), MCF-7 (2), HeLa (3), HCT116 (4), Jurkat (5), NIH/3T3 (6), and Cos7 (7) cell lysate.

Lot#:  
Clone#: 1D11  
Host and isotype: Mouse IgG1  
Size: 0.1ml  
MW: 83kDa  
Aliases: CTCF  
Entrez Gene: 10664  
Species reactivity: Human;  
Monkey

**Description** This gene is a member of the BORIS + CTCF gene family and encodes a transcriptional regulator protein with 11 highly conserved zinc finger (ZF) domains. This nuclear protein is able to use different combinations of the ZF domains to bind different DNA target sequences and proteins. Depending upon the context of the site, the protein can bind a histone acetyltransferase (HAT)-containing complex and function as a transcriptional activator or bind a histone deacetylase (HDAC)-containing complex and function as a transcriptional repressor. If the protein is bound to a transcriptional insulator element, it can block communication between enhancers and upstream promoters, thereby regulating imprinted expression. Mutations in this gene have been associated with invasive breast cancers, prostate cancers, and Wilms' tumors. Tissue specificity: Ubiquitous. Absent in primary spermatocytes.

**Immunogen** Purified recombinant fragment of human CTCF expressed in E. Coli.

**Application** Western Blotting: 1/500 - 1/2000.

ELISA: Propose dilution 1/10000.

Not yet tested in other applications.

Determining optimal working dilutions by titration test.

**Formulation** Ascitic fluid containing 0.03% sodium azide.

**Storage** Store at 4°C, for long term storage, store at -20°C.

#### Related product

**References** 1. J Mol Med. 2008 Sep;86(9):1057-66.

2. J Exp Med. 2008 Apr 14;205(4):785-98.

3. EMBO J. 2008 Feb 20;27(4):654-66.

**For Research Use Only**

**Contact:** Antagene, Inc. | Tel: 1 (866) 964-2589 | Fax: 1 (888) 225-1868 | Email: [Info@antageneinc.com](mailto:Info@antageneinc.com)