



**Category:** Monoclonal Antibodies  
**Product Name:** Mouse Monoclonal Antibody to TAB2

**Catalog Number:** MAB-606030123

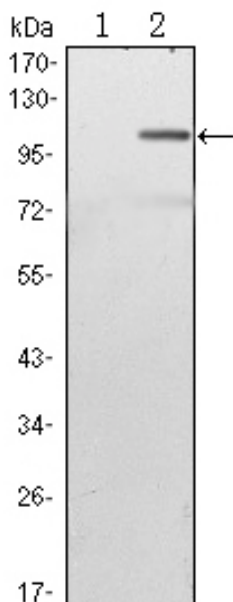


Figure 1: Western blot analysis using TAB2 mAb against HEK293 (1) and TAB2-hIgGfC transfected HEK293 (2) cell lysate.

Lot#:  
Clone#: 3B5  
Host and isotype: Mouse IgG1  
Size: 0.1ml  
MW: 80kDa  
Aliases: CHTD2; FLJ21885;  
KIAA0733; MAP3K7IP2; TAB2  
Entrez Gene: 23118  
Species reactivity: Human

**Description** The protein encoded by this gene is an activator of MAP3K7/TAK1, which is required for the IL-1 induced activation of nuclear factor kappaB and MAPK8/JNK. This protein forms a kinase complex with TRAF6, MAP3K7 and TAB1, thus serves as an adaptor linking MAP3K7 and TRAF6. This protein, TAB1, and MAP3K7 also participate in the signal transduction induced by TNFSF11/RANKL through the activation of the receptor activator of NF-kappaB (TNFRSF11A/RANK), which may regulate the development and function of osteoclasts.

**Immunogen** Purified recombinant fragment of human TAB2 expressed in E. Coli.

**Application** Western Blotting: 1/500 - 1/2000.  
Flow cytometry: 1/200 - 1/400.  
ELISA: Propose dilution 1/10000.  
Not yet tested in other applications.  
Determining optimal working dilutions by titration test.

**Formulation** Ascitic fluid containing 0.03% sodium azide.

**Storage** Store at 4°C, for long term storage, store at -20°C.

**Related product References** 1. J Clin Endocrinol Metab. 2006 Mar;91(3):1056-61.  
2. Sci STKE. 2006 Oct 17;2006(357):re13.  
3. Am J Hum Genet. 2010 Jun 11;86(6):839-49.

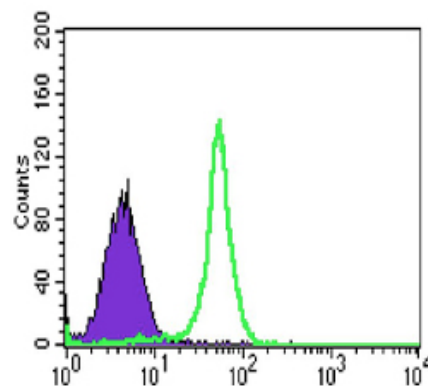


Figure 2: Flow cytometric analysis of HL-60 cells using TAB2 mouse mAb (green) and negative control (purple).

**For Research Use Only**

**Contact:** Antagene, Inc. | Tel: 1 (866) 964-2589 | Fax: 1 (888) 225-1868 | Email: [Info@antageneinc.com](mailto:Info@antageneinc.com)