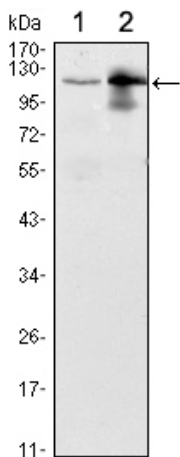




**Category:** Monoclonal Antibodies

**Product Name:** Mouse Monoclonal Antibody to UBE1L

**Catalog Number:** MAB-606030095



Lot#:

Clone#: 5B10

Host and isotype: Mouse IgG1

Size: 0.1ml

MW: 112kDa

Aliases: D8; UBE2; UBA1B;  
UBE1L; MGC12713; UBA7

Entrez Gene: 7318

Species reactivity: Human

Figure 1: Western blot analysis using UBE1L mouse mAb against Raji (1) and THP-1 (2) cell lysate.

**Description** The modification of proteins with ubiquitin is an important cellular mechanism for targeting. Tissue specificity: Expressed in a variety of normal and tumor cell types, but is reduced in lung cancer cell lines abnormal or short-lived proteins for degradation. Ubiquitination involves at least three classes of enzymes: ubiquitin-activating enzymes, or E1s, ubiquitin-conjugating enzymes, or E2s, and ubiquitin-protein ligases, or E3s. This gene encodes a member of the E1 ubiquitin-activating enzyme family. The encoded enzyme is a retinoid target that triggers promyelocytic leukemia (PML)/retinoic acid receptor alpha (RARalpha) degradation and apoptosis in acute promyelocytic leukemia, where it is involved in the conjugation of the ubiquitin-like interferon-stimulated gene 15 protein.

**Immunogen** Purified recombinant fragment of human UBE1L expressed in E. Coli.

**Application** Western Blotting: 1/500 - 1/2000.

ELISA: Propose dilution 1/10000.

Not yet tested in other applications.

Determining optimal working dilutions by titration test.

**Formulation** Ascitic fluid containing 0.03% sodium azide.

**Storage** Store at 4°C, for long term storage, store at -20°C.

**Related product References** 1. Cancer Res. 1992 Mar 15;52(6):1536-41

2. Proc Natl Acad Sci U S A. 1993 Jul 1;90(13):6071-5.

3. Proc Natl Acad Sci U S A. 2002 Mar 19;99(6):3806-11.

**For Research Use Only**

**Contact:** Antagene, Inc. | Tel: 1 (866) 964-2589 | Fax: 1 (888) 225-1868 | Email: [Info@antageneinc.com](mailto:Info@antageneinc.com)