



Category: Monoclonal Antibodies Cat. #: MAB-606030077

Product Name: Mouse Monoclonal Antibody to BCL-2

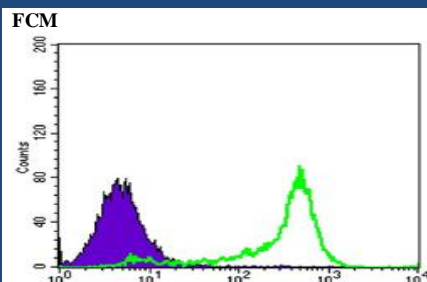


Figure 1: Flow cytometric analysis of 3T3L1 cells using BCL-2 mouse mAb (green) and negative control (purple).

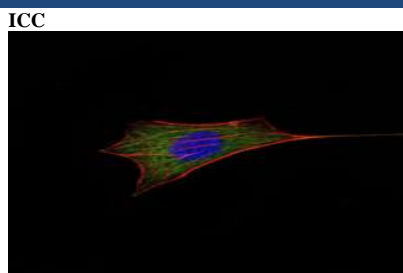


Figure 2: Immunofluorescence analysis of NIH/3T3 cells using BCL-2 mouse mAb (green). Blue: DRAQ5 fluorescent DNA dye. Red: Actin filaments have been labeled with Alexa Fluor-555 phalloidin

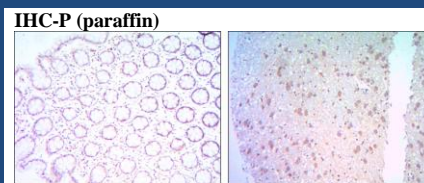


Figure 3: Immunohistochemical analysis of paraffin-embedded colon cancer tissues (left) and human brain tissues (right) using BCL-2 mouse mAb with DAB staining.

Lot#:	MW: 26kDa
Clone#: 8E12	Aliases: Bcl-2; BCL2
Host and isotype: Mouse IgG1	Entrez Gene: 596
Size: 0.1ml	Species reactivity: Human; Mouse

Description

This gene encodes an integral outer mitochondrial membrane protein that blocks the apoptotic death of some cells such as lymphocytes. Constitutive expression of BCL2, such as in the case of translocation of BCL2 to Ig heavy chain locus, is thought to be the cause of follicular lymphoma. Tissue specificity: Expressed in a variety of tissues.

Immunogen

Synthetic peptide corresponding to residues surrounding BCL-2, conjugated to KLH.

Applications

Immunohistochemistry: 1/200 - 1/1000.

Immunofluorescence: 1/200 - 1/1000.

Flow cytometry: 1/200 - 1/400.

ELISA: Propose dilution 1/10000.

Not yet tested in other applications.

Determining optimal working dilutions by titration test.

Formulation

Ascitic fluid containing 0.03% sodium azide.

Storage

Store at 4°C, for long term storage, store at -20°C.

Related product

References

1. J Biol Chem. 2010 Mar 26;285(13):9770-9.
2. Pharmacogenomics J. 2010 Feb 16.
3. J Int Med Res. 2009 Nov-Dec;37(6):1868-76.

For Research Use Only

Contact: Antagene, Inc. | Tel: 1 (866) 964-2589 | Fax: 1 (888) 225-1868 | Email: Info@antageneinc.com