



**Category:** Monoclonal Antibodies  
**Product Name:** Mouse Monoclonal Antibody to SAT6

**Catalog Number:** MAB-606030068

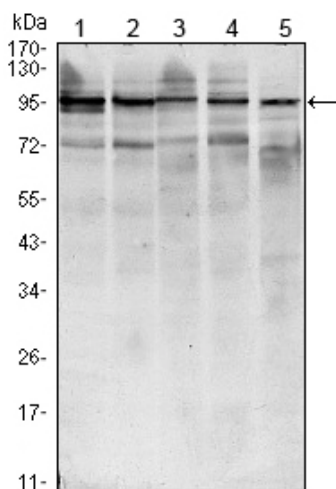


Figure 1: Western blot analysis using STAT6 mouse mAb against HEK293 (1), NIH/3T3 (2), MCF-7 (3), Raw246.7 (4) and PC-12 (5) cell lysate.

Lot#:  
Clone#: 7D3  
Host and isotype: Mouse IgG1  
Size: 0.1ml  
MW: 94kDa  
Aliases: STAT6B; STAT6C;  
D12S1644; IL-4-STAT; STAT6  
Entrez Gene: 6778  
Species reactivity: Human;  
Mouse; Rat; Monkey

**Description** STAT6 protein is a transcription factor activated by cytokines, particularly interleukin 4 and IL 13. (STAT6<sup>-/-</sup>) were found to be deficient in IL 4 mediated functions including Th2 helper T cell differentiation, expression of cell surface markers, T cell proliferation, immunoglobulin class switching to IgE, and partial loss of IL 4 mediated proliferation. STAT6 mRNA has been detected in peripheral blood lymphocytes, colon, intestine, ovary, prostate, thymus, spleen, kidney, liver, lung and placenta. STAT6 is critically involved in Th2 immune response.

**Immunogen** Purified recombinant fragment of human STAT6 expressed in E. Coli.

**Application** Western Blotting: 1/500 - 1/2000.  
Immunofluorescence: 1/200 - 1/1000.  
ELISA: Propose dilution 1/10000.  
Not yet tested in other applications.  
Determining optimal working dilutions by titration test.

**Formulation** Ascitic fluid containing 0.03% sodium azide.

**Storage** Store at 4°C, for long term storage, store at -20°C.

**Related product References** 1. *Pediatr Nephrol.* 2009 Mar;24(3):489-95.  
2. *Mol Immunol.* 2009 Jun;46(10):2080-9.  
3. *Am J Hum Genet.* 2009 Nov;85(5):628-42.

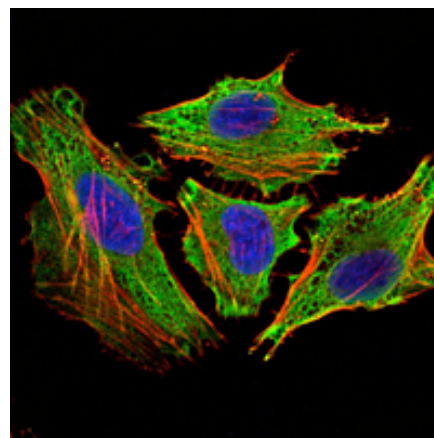


Figure 2: Immunofluorescence analysis of HeLa cells using STAT6 mouse mAb (green). Blue: DRAQ5 fluorescent DNA dye. Red: Actin filaments have been labeled with Alexa Fluor-555 phalloidin

**For Research Use Only**

**Contact:** Antagene, Inc. | Tel: 1 (866) 964-2589 | Fax: 1 (888) 225-1868 | Email: [Info@antageneinc.com](mailto:Info@antageneinc.com)