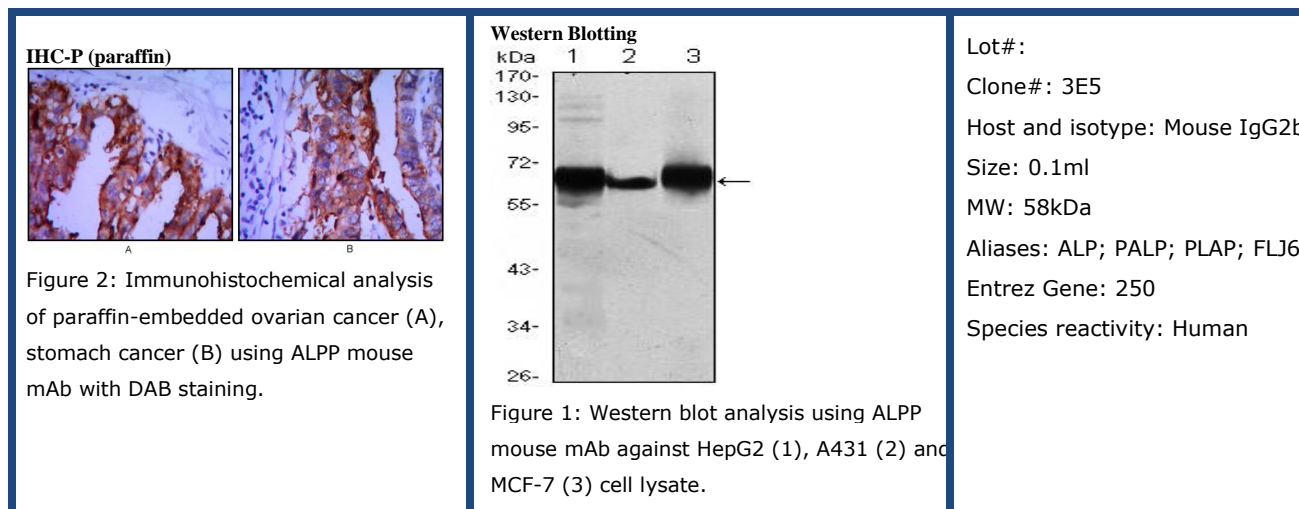




**Category: Monoclonal Antibodies Cat. #: MAB-606030061**

**Product Name: Mouse Monoclonal Antibody to ALPP**



#### Description

There are at least four distinct but related alkaline phosphatases: intestinal, placental, placental-like, and liver/bone/kidney (tissue non-specific). The first three are located together on chromosome 2 while the tissue non-specific form is located on chromosome 1. The product of this gene is a membrane bound glycosylated enzyme, also referred to as the heat stable form, that is expressed primarily in the placenta although it is closely related to the intestinal form of the enzyme as well as to the placental-like form. The coding sequence for this form of alkaline phosphatase is unique in that the 3' untranslated region contains multiple copies of an Alu family repeat. In addition, this gene is polymorphic and three common alleles (type 1, type 2 and type 3) for this form of alkaline phosphatase have been well characterized.

#### Immunogen

Purified recombinant fragment of human ALPP expressed in E. Coli.

#### Applications

Western Blotting: 1/500 - 1/2000.

Immunohistochemistry: 1/200 - 1/1000.

ELISA: Propose dilution 1/10000.

Not yet tested in other applications.

Determining optimal working dilutions by titration test.

#### Formulation

Ascitic fluid containing 0.03% sodium azide.

#### Storage

Store at 4°C, for long term storage, store at -20°C.

#### Related product

#### References

1. J Cell Biochem. 2003 Apr 1;88(5):1025-37.
2. J Mol Biol. 2005 Jul 15;350(3):441-51.

**For Research Use Only**

**Contact: Antagene, Inc. | Tel: 1 (866) 964-2589 | Fax: 1 (888) 225-1868 | Email:Info@antageneinc.com**