



Category: Monoclonal Antibodies
Product Name: Mouse Monoclonal Antibody to CK7

Catalog Number: MAB-606030013

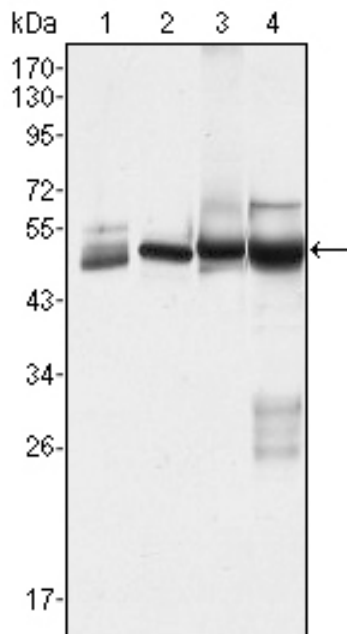


Figure 1: Western blot analysis using CK7 mouse mAb against Hela (1), MCF-7 (2), A431 (3) and A549 (4) cell lysate.

Lot#:
Clone#: 5D12
Host and isotype: Mouse IgG1
Size: 0.1ml
MW: 51kDa
Aliases: KRT7; cytokeratin 7
Entrez Gene: 3855
Species reactivity: Human

Description CK7 (Keratin, type II cytoskeletal 7) is a protein that in humans is encoded by the KRT7 gene. CK7 is a member of the keratin family. It is specifically expressed in the simple epithelia lining the cavities of the internal organs and in the gland ducts and blood vessels. The protein encoded by this gene is a member of the keratin gene family. The type II cytokeratins consist of basic or neutral proteins which are arranged in pairs of heterotypic keratin chains coexpressed during differentiation of simple and stratified epithelial tissues. This type II cytokeratin is specifically expressed in the simple epithelia lining the cavities of the internal organs and in the gland ducts and blood vessels. The genes encoding the type II cytokeratins are clustered in a region of chromosome 12q12-q13. Alternative splicing may result in several transcript variants; however, not all variants have been fully described.

Immunogen Purified recombinant fragment of human CK7 expressed in E. Coli.

Application Western Blotting: 1/500 - 1/2000.

Flow cytometry: 1/200 - 1/400.

ELISA: Propose dilution 1/10000.

Not yet tested in other applications.

Determining optimal working dilutions by titration test.

Formulation Ascitic fluid containing 0.03% sodium azide.

Storage Store at 4°C, for long term storage, store at -20°C.

Related product

References 1. Cytogenet Cell Genet. 1991;57(1):33-8.

2. J Pathol. 1998 Mar;184(3):234-9.

3. J Cell Biol. 2006 Jul 17;174(2):169-74.

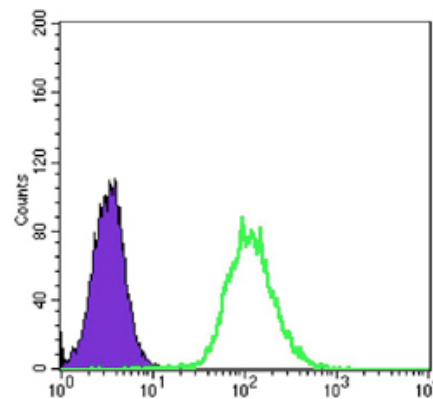


Figure 2: Flow cytometric analysis of Hela cells using anti-CK7 mAb (green) and negative control (purple).

For Research Use Only