



Category: Monoclonal Antibodies
Product Name: Mouse Monoclonal Antibody to CSF1

Catalog Number: MAB-60603008

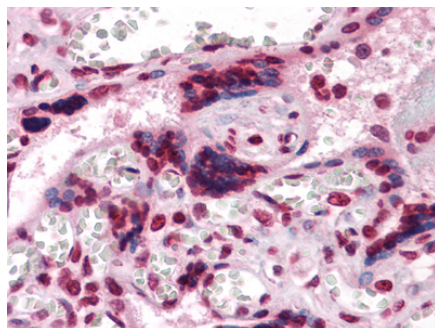
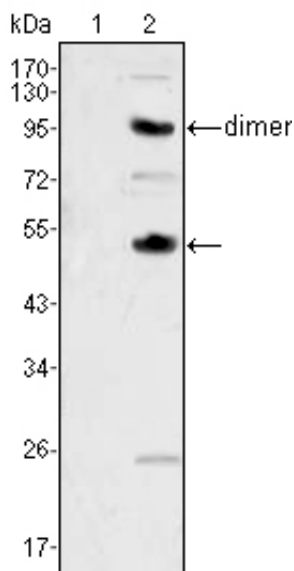


Figure 2: Immunohistochemical analysis of paraffin-embedded human Placenta tissues using anti-CSF1 mouse mAb

Lot#:
Clone#: 2D10
Host and isotype: Mouse IgG1
Size: 0.1ml
MW: 60kDa
Aliases: MCSF
Entrez Gene: 1435
Species reactivity: Human

Figure 1: Western blot analysis using CSF1 mouse mAb against human recombinant CSF2 (1) and CSF1 (2).

Description CSF1, also known as MCSF, is a four- α -helical bundle cytokine that controls the production, differentiation, and function of macrophages. The active form of the protein is found extracellularly as a disulfide-linked homodimer, and is thought to be produced by proteolytic cleavage of membrane-bound precursors. This protein may be involved in development of the placenta.

Immunogen Purified recombinant fragment of human CSF1 expressed in E. Coli.

Application Western Blotting: 1/500 - 1/2000.
Immunohistochemistry: 1/200 - 1/1000.
ELISA: Propose dilution 1/10000.
Not yet tested in other applications.
Determining optimal working dilutions by titration test.

Formulation Ascitic fluid containing 0.03% sodium azide.

Storage Store at 4°C, for long term storage, store at -20°C.

Related product

References 1. J Biol Chem. 1992 Feb 5;267(4):2190-9.
2. FEBS Lett. 1987 Oct 5;222(2):341-4.
3. Mol Reprod Dev. 1997 Jan;46(1):4-10.

For Research Use Only