



Category: Monoclonal Antibodies Cat. #: MAB-606030001
Product Name: Mouse Monoclonal Antibody to ATP2C1

IHC-P (paraffin)

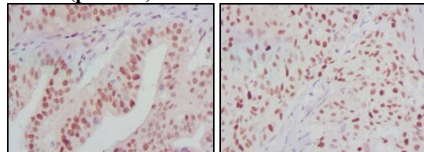


Figure 3: Immunohistochemical analysis of paraffin-embedded human ovarian cancer (left) and breast cancer (right) tissues using ATP2C1 mouse mAb with DAB staining.

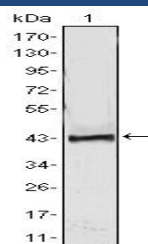


Figure 1: Western blot analysis using ATP2C1 mouse mAb against human recombinant ATP2C1.

Lot#:

Clone#: 4G12

Host and isotype: Mouse IgG1

Size: 0.1ml

MW: 100kDa

Aliases: HHD; BCPM; PMR1; SPCA1

Entrez Gene: 27032

Species reactivity: Human; Monkey

Description

ATP2C1, also known as PMR1, it belongs to the family of P-type cation transport ATPases. This magnesium-dependent enzyme catalyzes the hydrolysis of ATP coupled with the transport of the calcium. The human homologue, ATP2C1 (also designated SPLA in rat), also regulates the transport of calcium in the Golgi complex and is related to other P-type ATPases family members, such as the sarco(endo)plasmic calcium ATPase (SERCA) and the plasma membrane calcium ATPase (PCMA). ATP2C1 is a transmembrane protein that exists as two splice variants, which vary by 20 amino acids. Defects in ATP2C1 cause Hailey-Hailey disease, which is an autosomal dominant disorder that is characterized by blisters and erosions of the skin. These findings provide further evidence that PMR1 plays a key role in maintaining the integrity of the epidermis by controlling intracellular calcium signaling.

Immunogen

Purified recombinant fragment of ATP2C1 expressed in E. Coli.

Applications

Western Blotting: 1/500 - 1/2000.

Immunohistochemistry: 1/200 - 1/1000.

ELISA: Propose dilution 1/10000.

Not yet tested in other applications.

Determining optimal working dilutions by titration test.

Formulation

Ascitic fluid containing 0.03% sodium azide.

Storage

Store at 4°C, for long term storage, store at -20°C.

Related product

References

1. J Invest Dermatol. 2005 Nov;125(5):933-5.
2. J Dermatol Sci. 2006 Aug;43(2):150

For Research Use Only

Contact: Antagene, Inc. | Tel: 1 (866) 964-2589 | Fax: 1 (888) 225-1868 | Email: Info@antageneinc.com