



**Category:** Monoclonal Antibodies  
**Product Name:** Mouse Monoclonal Antibody to TBL1X

**Catalog Number:** MAB-606020418

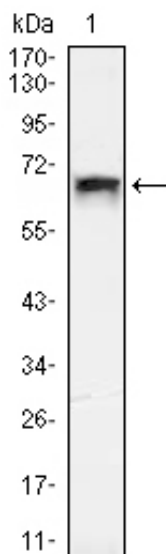


Figure 1: Western blot analysis using TBL1X mouse mAb against HEK293 (1) cell lysate.

Lot#:  
Clone#: 4G1  
Host and isotype: Mouse IgG1  
Size: 0.1ml  
MW: 62.4kDa  
Aliases: EBI; TBL1; SMAP55; TBL1X  
Entrez Gene: 6907  
Species reactivity: Human; Monkey

**Description** The protein encoded by this gene has sequence similarity with members of the WD40 repeat-containing protein family. The WD40 group is a large family of proteins, which appear to have a regulatory function. It is believed that the WD40 repeats mediate protein-protein interactions and members of the family are involved in signal transduction, RNA processing, gene regulation, vesicular trafficking, cytoskeletal assembly and may play a role in the control of cytotypic differentiation. This encoded protein is found as a subunit in corepressor SMRT (silencing mediator for retinoid and thyroid receptors) complex along with histone deacetylase 3 protein. This gene is located adjacent to the ocular albinism gene and it is thought to be involved in the pathogenesis of the ocular albinism with late-onset sensorineural deafness phenotype. Four transcript variants encoding two different isoforms have been found for this gene. This gene is highly similar to the Y chromosome TBL1Y gene.

**Immunogen** Purified recombinant fragment of human TBL1X expressed in E. Coli.

**Application** Western Blotting: 1/500 - 1/2000.  
ELISA: Propose dilution 1/10000.  
Not yet tested in other applications.  
Determining optimal working dilutions by titration test.

**Formulation** Ascitic fluid containing 0.03% sodium azide.

**Storage** Store at 4°C, for long term storage, store at -20°C.

**Related product References** 1. Am J Hum Genet. 1999 Jun;64(6):1604-16.  
2. Cell. 2002 Jul 12;110(1):55-67.

**For Research Use Only**

**Contact:** Antagene, Inc. | Tel: 1 (866) 964-2589 | Fax: 1 (888) 225-1868 | Email: [Info@antageneinc.com](mailto:Info@antageneinc.com)