



Category: Monoclonal Antibodies
Product Name: Mouse Monoclonal Antibody to Metadherin

Catalog Number: MAB-606020407

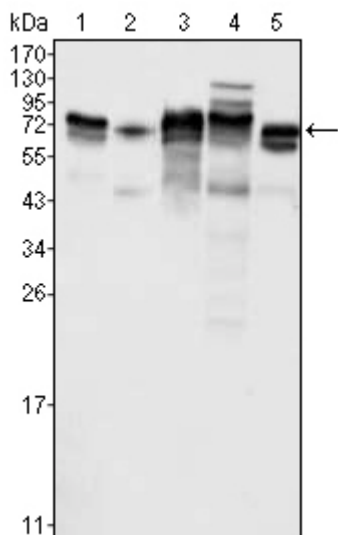


Figure 1: Western blot analysis using Metadherin mouse mAb against K562 (1), SKBR-3 (2), T47D (3), HeLa (4) and MCF-7 (5) cell lysate.

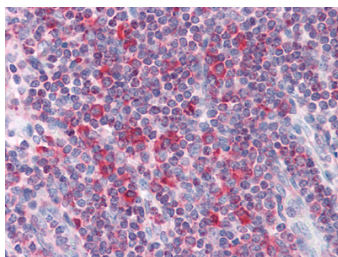


Figure 2: Immunohistochemical analysis of paraffin-embedded human Liver tissues using Metadherin mouse mAb

Lot#:
Clone#: 2F11C3
Host and isotype: Mouse IgG1
Size: 0.1ml
MW: 64kDa
Aliases: 3D3; AEG1; LYRIC; MTDH
Entrez Gene: 92140
Species reactivity: Human

Description Metadherin (Metastasis adhesion protein), also known as MTDH, LYsine-RiCh CEACAM1 co-isolated (LYRIC), is a novel protein that localizes with the tight junction proteins ZO-1 and occludin in polarized epithelial cells. At the tight junction, it acts not as a structural component, but is rather recruited during the maturation of the tight junction complex. Metadherin is overexpressed in breast cancer tissue and breast tumor xenografts, while much lower levels are expressed in normal breast tissue. Metadherin binds to lung vasculature, one of the four common sites of breast cancer metastasis, through a C-terminal segment in the extracellular domain; blocking this lung-homing domain with antibodies or inhibiting metadherin with siRNA has been reported to inhibit breast cancer metastasis.

Immunogen Purified recombinant fragment of human Metadherin expressed in E. Coli.

Application Western Blotting: 1/500 - 1/2000.
Immunohistochemistry: 1/200 - 1/1000.
Flow cytometry: 1/200 - 1/400.
ELISA: Propose dilution 1/10000.
Not yet tested in other applications.
Determining optimal working dilutions by titration test.

Formulation Antibody are purified by protein G affinity chromatography.
Liquid in PBS containing 50% glycerol and 0.03% sodium azide.

Storage Store at 4°C, for long term storage, store at -20°C.

Related product References 1. Cancer Cell. 2004 Apr;5(4):365-74.
2. Exp Cell Res. 2004 Oct 15;300(1):134-48.
3. Cancer Cell. 2009 Jan 6;15(1):9-20.

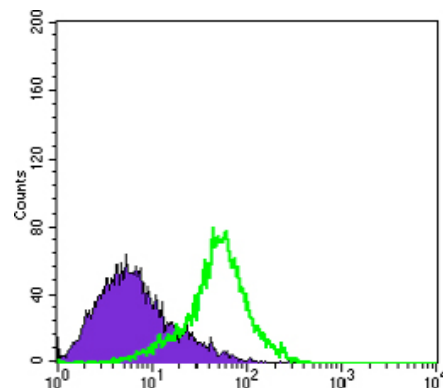


Figure 3: Flow cytometric analysis of HeLa cells using Metadherin mouse mAb (green) and negative control (purple).

For Research Use Only