



Category: Monoclonal Antibodies

Product Name: Mouse Monoclonal Antibody to CER1

Catalog Number: MAB-606020392

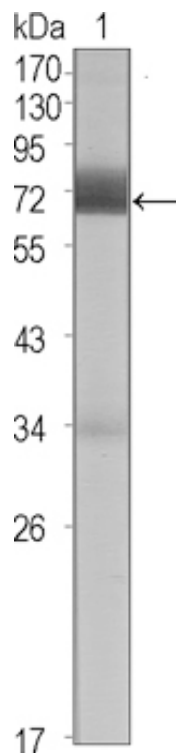


Figure 1: Western blot analysis using CER1 mouse mAb against CER1 (aa18-267)-hIgGFc transfected HEK293 cell lysate (1).

Lot#:
Clone#: 5C6
Host and isotype: Mouse IgG1
Size: 0.1ml
MW: 30kDa
Aliases: DAND4
Entrez Gene: 9350
Species reactivity: Human

Description CER1: cerberus 1, cysteine knot superfamily, homolog (*Xenopus laevis*). It is a cytokine member of the cysteine knot superfamily, characterized by nine conserved cysteines and a cysteine knot region. The cerberus-related cytokines, together with Dan and DRM/Gremlin, represent a group of bone morphogenetic protein (BMP) antagonists that can bind directly to BMPs and inhibit their activity.

Immunogen Purified recombinant fragment of human CER1 expressed in *E. Coli*.

Application Western Blotting: 1/500 - 1/2000.

ELISA: Propose dilution 1/10000.

Not yet tested in other applications.

Determining optimal working dilutions by titration test.

Formulation Ascitic fluid containing 0.03% sodium azide.

Storage Store at 4°C, for long term storage, store at -20°C.

Related product

- References**
1. Dev Biol. 1998 Feb 15;194(2):135-51.
 2. Growth Factors. 2004 Dec;22(4):233-41.
 3. PLoS One. 2009;4(4):e5302.

For Research Use Only