



Category: Monoclonal Antibodies
Product Name: Mouse Monoclonal Antibody to AAT

Catalog Number: MAB-606020350

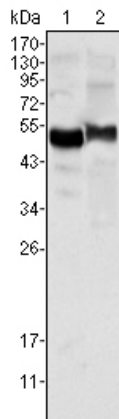


Figure 1: Western blot analysis using AAT mouse mAb against human plasma (1) and NIH/3T3 cell lysate (2)

Lot#:
Clone#: 2B12
Host and isotype: Mouse IgG1
Size: 0.1ml
MW: 47kDa
Aliases: PI; A1A; AAT; PI1; A1AT; SERPINA1
Entrez Gene: 5265
Species reactivity: Human; Mouse

Description

AAT, also known as SERPINA1; serpin peptidase inhibitor, clade A (alpha-1 antiproteinase, antitrypsin), member 1. It is secreted and is a serine protease inhibitor whose targets include elastase, plasmin, thrombin, trypsin, chymotrypsin, and plasminogen activator. Severe Serpin A1 deficiency leads to several clinical complications such as pulmonary emphysema, juvenile hepatitis, cirrhosis and hepatocellular carcinoma.

Immunogen

Purified recombinant fragment of human AAT expressed in E. Coli.

Application

Western Blotting: 1/500 - 1/2000.
ELISA: Propose dilution 1/10000.
Not yet tested in other applications.
Determining optimal working dilutions by titration test.

Formulation

Ascitic fluid containing 0.03% sodium azide.

Storage

Store at 4°C, for long term storage, store at -20°C.

Related product

References

1. J Proteome Res. 2005 Nov-Dec;4(6):2070-80.
2. Neuro Endocrinol Lett. 2008 Aug;29(4):482-4.

For Research Use Only