



**Category:** Monoclonal Antibodies  
**Product Name:** Mouse Monoclonal Antibody to MYL2

**Catalog Number:** MAB-606020324

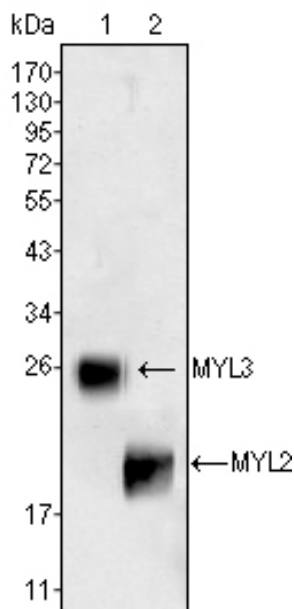


Figure 1: Western blot analysis using MYL3 (1) and MYL2 (2) mouse mAb against rat fetal heart tissue lysate.

Lot#:  
Clone#: 7C9  
Host and isotype: Mouse IgG1  
Size: 0.1ml  
MW: 19kDa  
Aliases: MLC2; CMH10;  
DKFZp779C0562  
Entrez Gene: 4633  
Species reactivity: Human

**Description** MYL2(myosin, light chain 2, regulatory, cardiac, slow), also known as MLC-2, MLC2v. Entrez protein NP\_000423. MYL2 associated with cardiac myosin beta (or slow) heavy chain. Ca<sup>+</sup> triggers the phosphorylation of regulatory light chain that in turn triggers contraction. It is an hexamer of two heavy chains and four light chains that is predominantly expressed in adult cardiac ventricle muscle. Mutations in MYL2 are associated with mid-left ventricular chamber type hypertrophic cardiomyopathy.

**Immunogen** Purified recombinant fragment of MYL2 expressed in E. Coli.

**Application** Western Blotting: 1/500 - 1/2000.  
ELISA: Propose dilution 1/10000.  
Not yet tested in other applications.  
Determining optimal working dilutions by titration test.

**Formulation** Ascitic fluid containing 0.03% sodium azide.

**Storage** Store at 4iæ, for long term storage, store at -20iæ.

#### Related product

1. #20342, Mouse Monoclonal Antibody to MYL3;
2. #20343, Mouse Monoclonal Antibody to MYL3.

#### References

1. DNA Seq. 2003 Oct;14(5):339-50.
2. Oncogene. 2002 Aug 29;21(38):5852-60.

**For Research Use Only**