



**Category:** Monoclonal Antibodies

**Product Name:** Mouse Monoclonal Antibody to Cytokeratin 5

**Catalog Number:** MAB-606020322

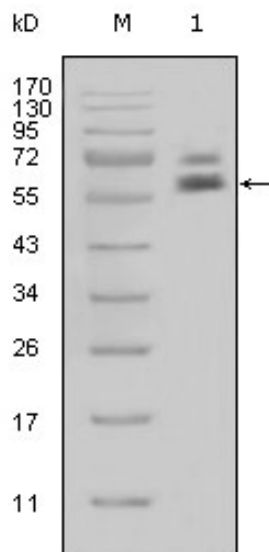


Figure 1: Western blot analysis using CK5 mouse mAb against Hela cell lysate (1).

Lot#:

Clone#: 1E1

Host and isotype: Mouse IgG1

Size: 0.1ml

MW: 62.3kDa

Aliases: K5; CK5; KRT5A; KRT5

Entrez Gene: 3852

Species reactivity: Human

**Description** Cytokeratin 5, also known as CK5, KRT5. It is a member of the keratin gene family. Biochemically, most members of the CK family fall into one of two classes, type I (acidic polypeptides) and type II (basic polypeptides). The type II cytokeratins consist of basic or neutral proteins which are arranged in pairs of heterotypic keratin chains coexpressed during differentiation of simple and stratified epithelial tissues. This type II cytokeratin is specifically expressed in the basal layer of the epidermis with family member KRT14. The type II cytokeratins are clustered in a region of chromosome 12q12-q13. At least one member of the acidic family and one member of the basic family is expressed in all epithelial cells. Cytokeratin 5 is expressed in normal basal cells. Mutations of the Cytokeratin5 gene (KRT5) have been shown to result in the autosomal dominant disorder epidermolysis bullosa (EB). Defects in KRT5 are a cause of epidermolysis bullosa simplex.

**Immunogen** Purified recombinant fragment of Cytokeratin 5 expressed in E. Coli.

**Application** Western Blotting: 1/500 - 1/2000.

ELISA: Propose dilution 1/10000.

Not yet tested in other applications.

Determining optimal working dilutions by titration test.

**Formulation** Ascitic fluid containing 0.03% sodium azide.

**Storage** Store at 4°C, for long term storage, store at -20°C.

**Related product**

1. Mab-2008112, Mouse Monoclonal Antibody to Cytokeratin 8;
2. Mab-2008118, Mouse Monoclonal Antibody to Cytokeratin 18;
3. Mab-2008119, Mouse Monoclonal Antibody to Cytokeratin 18;
4. Mab-2008125, Mouse Monoclonal Antibody to Cytokeratin 19.

**References** 1. J Invest Dermatol. 2003 Sep;121(3):482-5.

2. J Cell Sci. 2005 Mar 1;118(Pt 5):1081-90.

**For Research Use Only**

**Contact:** Antagene, Inc. | Tel: 1 (866) 964-2589 | Fax: 1 (888) 225-1868 | Email: [Info@antageneinc.com](mailto:Info@antageneinc.com)