



**Category:** Monoclonal Antibodies

**Product Name:** Mouse Monoclonal Antibody to Cytokeratin 19

**Catalog Number:** MAB-606020297

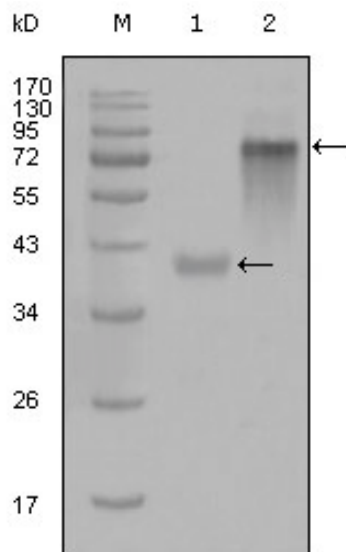


Figure 1: Western blot analysis using KRT19 mouse mAb against truncated KRT19-His recombinant protein (1) and full-length KRT19(aa1-400)-hIgGfC transfected CHO-K1 cell lysate(2).

Lot#:

Clone#: 4F12G9

Host and isotype: Mouse IgG1

Size: 0.1ml

MW: 44kDa

Aliases: CK19; K1CS;

MGC15366; KRT19

Entrez Gene: 3880

Species reactivity: Human

**Description** Cytokeratin 19, also known as KRT19, CK19, K1CS, MGC15366. Entrez Protein NP\_002267. It is a member of the keratin family. The keratins are intermediate filament proteins responsible for the structural integrity of epithelial cells and are subdivided into cytokeratins and hair keratins. The type I cytokeratins consist of acidic proteins which are arranged in pairs of heterotypic keratin chains. Unlike its related family members, this smallest known acidic cytokeratin is not paired with a basic cytokeratin in epithelial cells. It is specifically expressed in the periderm, the transiently superficial layer that envelopes the developing epidermis.

**Immunogen** Purified recombinant fragment of Cytokeratin 19 (aa80-400) expressed in E. Coli strain.

**Application** Western Blotting: 1/500 - 1/2000.

ELISA: Propose dilution 1/10000.

Not yet tested in other applications.

Determining optimal working dilutions by titration test.

**Formulation** Ascitic fluid containing 0.03% sodium azide.

**Storage** Store at 4°C, for long term storage, store at -20°C.

**Related product** 1. Mab-2008112, Mouse Monoclonal Antibody to Cytokeratin 8;

2. Mab-2008118, Mouse Monoclonal Antibody to Cytokeratin 18;

3. Mab-2008119, Mouse Monoclonal Antibody to Cytokeratin 18.

**References** 1. Lung Cancer. 2007 Dec;58(3):369-75.

2. Endocr Pract. 2008 Mar;14(2):168-74.

**For Research Use Only**

**Contact:** Antagene, Inc. | Tel: 1 (866) 964-2589 | Fax: 1 (888) 225-1868 | Email: [Info@antageneinc.com](mailto:Info@antageneinc.com)