



Category: Monoclonal Antibodies

Product Name: Mouse Monoclonal Antibody to LPA

Catalog Number: MAB-606020294

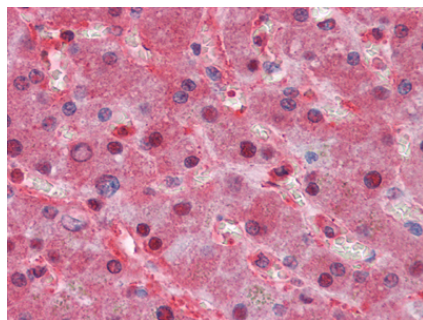
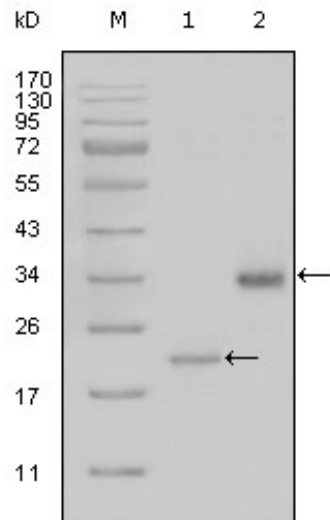


Figure 2: Immunohistochemical analysis of paraffin-embedded human Liver tissues using LPA mouse mAb

Figure 1: Western blot analysis using LPA mouse mAb against truncated LPA-His recombinant protein (1) and truncated Trx-LPA(aa4330-4521) recombinant protein (2).

Catalog#: 20294
Lot#:
Clone#: 8F6A9,8H5C5
Host and isotype: Mouse IgG1
Size: 0.1ml
MW:
Aliases: LP; AK38; APOA; LPA
Entrez Gene: 4018
Species reactivity: Human

Description LPA: lipoprotein, Lp(a). Apo(a) is the main constituent of lipoprotein(a) (Lp(a)). It has serine proteinase activity and is able of autoproteolysis. Inhibits tissue-type plasminogen activator 1.Lp(a) may be a ligand for megalin/gp 330.Apo(a) is known to be proteolytically cleaved, leading to the formation of the so-called mini-Lp(a).Apo(a) fragments accumulate in atherosclerotic lesions,where they may promote thrombogenesis.O-glycosylation may limit the extent of proteolytic fragmentation.

Immunogen Purified recombinant fragment of LPA (4330-4521) expressed in E. Coli.

Application Western Blotting: 1/500 - 1/2000.

Immunohistochemistry: 1/200 - 1/1000.

ELISA: Propose dilution 1/10000.

Not yet tested in other applications.

Determining optimal working dilutions by titration test.

Formulation Ascitic fluid containing 0.03% sodium azide.

Storage Store at 4°C, for long term storage, store at -20°C.

Related product

References 1. J Stroke Cerebrovasc Dis. 2007 Sep-Oct;16(5):220-4.

2. Clin Chim Acta. 2008 Jan;387(1-2):109-12.

For Research Use Only

Contact: Antagene, Inc. | Tel: 1 (866) 964-2589 | Fax: 1 (888) 225-1868 | Email: Info@antageneinc.com