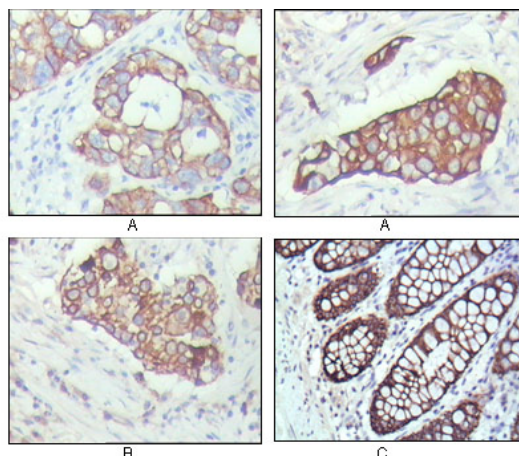
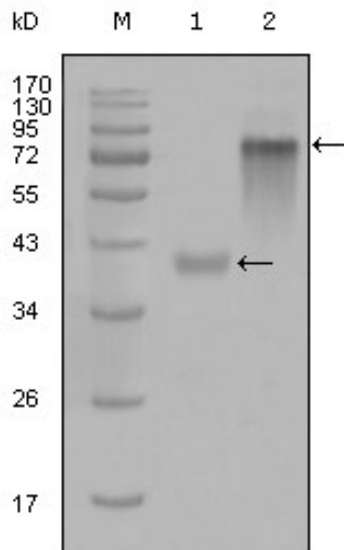




Category: Monoclonal Antibodies

Product Name: Mouse Monoclonal Antibody to Cytokeratin 19

Catalog Number: MAB-606020283



Lot#:

Clone#: 9H8G6

Host and isotype: Mouse IgG1

Size: 0.1ml

MW: 44kDa

Aliases: CK19; K1CS;

MGC15366; KRT19

Entrez Gene: 3880

Species reactivity: Human

Figure 2: Immunohistochemical analysis of paraffin-embedded human breast carcinoma(A), lung cancer(B) and normal colon tissue(C), showing cytoplasmic localization with DAB

Figure 1: Western blot analysis using anti-KRT19 monoclonal antibody against truncated KRT19-His recombinant protein (1) and full-length KRT19(aa1-400)-hIgGFc transfected CHO-K1 cell lysate(2).

Description Cytokeratin 19, also known as KRT19, CK19, CK19, K1CS, MGC15366. Entrez Protein NP_002267. It is a member of the keratin family. The keratins are intermediate filament proteins responsible for the structural integrity of epithelial cells and are subdivided into cytokeratins and hair keratins. The type I cytokeratins consist of acidic proteins which are arranged in pairs of heterotypic keratin chains. Unlike its related family members, this smallest known acidic cytokeratin is not paired with a basic cytokeratin in epithelial cells. It is specifically expressed in the periderm, the transiently superficial layer that envelopes the developing epidermis.

Immunogen Purified recombinant fragment of Cytokeratin 19 (aa80-400) expressed in E. Coli.

Application Western Blotting: 1/500 - 1/2000.

Immunohistochemistry: 1/200 - 1/1000.

ELISA: Propose dilution 1/10000.

Not yet tested in other applications.

Determining optimal working dilutions by titration test.

Formulation Ascitic fluid containing 0.03% sodium azide.

Storage Store at 4°C, for long term storage, store at -20°C.

Related product 1. Mab-2008112, Mouse Monoclonal Antibody to Cytokeratin 8;
2. Mab-2008118, Mouse Monoclonal Antibody to Cytokeratin 18;
3. Mab-2008119, Mouse Monoclonal Antibody to Cytokeratin 18.

References 1. Lung Cancer. 2007 Dec;58(3):369-75.
2. Endocr Pract. 2008 Mar;14(2):168-74.

For Research Use Only

Contact: Antagene, Inc. | Tel: 1 (866) 964-2589 | Fax: 1 (888) 225-1868 | Email: Info@antageneinc.com