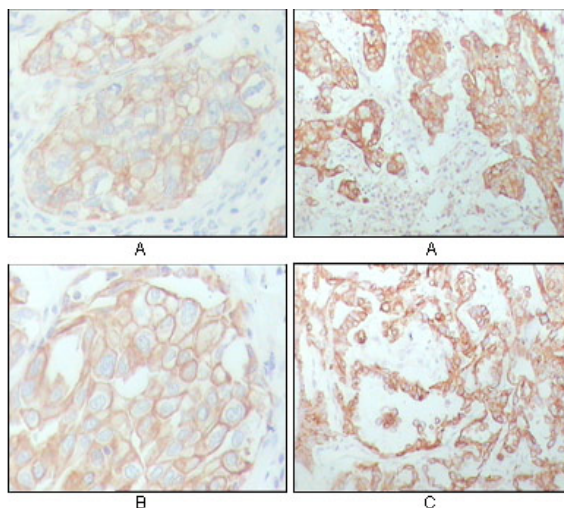
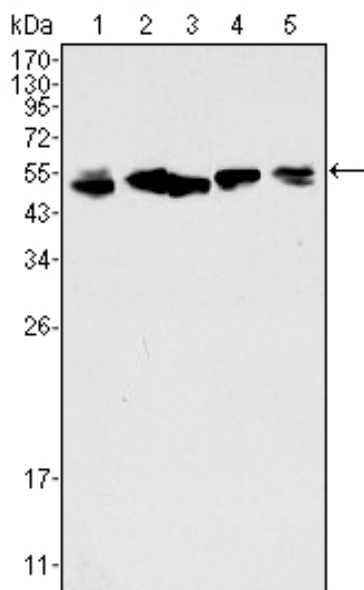




Category: Monoclonal Antibodies
Product Name: Mouse Monoclonal Antibody to Cytokeratin

Catalog Number: MAB-606020280



Lot#:
Clone#: 8A5D12
Host and isotype: Mouse IgG1
Size: 0.1ml
MW: 54kDa
Aliases: CK8; CYK8; K2C8; KRT8
Entrez Gene: 3856
Species reactivity: Human

Figure 2: Immunohistochemical analysis of paraffin-embedded human breast carcinoma (A), lung cancer (B) and ovarian cancer tissue (C), showing membrane and cytoplasmic localization with DAB staining using CK8 mouse mAb.

Figure 1: Western blot analysis using CK8 mouse mAb against A549 (1), Hela (2), MCF-7 (3), A431 (4) and HepG2 (5) cell lysate.

Description Cytokeratin 8, also known as CK8, KRT8, K8. Entrez Protein NP_002264. It is a member of the type II keratin family. Type I and type II keratins heteropolymerize to form intermediate-sized filaments in the cytoplasm of epithelial cells. It typically dimerizes with keratin 18 to form an intermediate filament in simple single-layered epithelial cells. This protein plays a role in maintaining cellular structural integrity and also functions in signal transduction and cellular differentiation. Mutations in this gene cause cryptogenic cirrhosis.

Immunogen Purified recombinant fragment of human Cytokeratin (aa391-483) expressed in E. Coli.

Application Western Blotting: 1/500 - 1/2000.
Immunohistochemistry: 1/200 - 1/1000.
Immunofluorescence: 1/200 - 1/1000.
ELISA: Propose dilution 1/10000.
Not yet tested in other applications.
Determining optimal working dilutions by titration test.

Formulation Ascitic fluid containing 0.03% sodium azide.

Storage Store at 4°C, for long term storage, store at -20°C.

Related product 1. #20276, Mouse Monoclonal Antibody to Cytokeratin 18;
2. #20277, Mouse Monoclonal Antibody to Cytokeratin 18;
3. #20283, Mouse Monoclonal Antibody to Cytokeratin 19.

References 1. Cancer Genet Cytogenet. 2007 Oct 15;178(2):94-103.
2. Cancer Lett. 2008 Jul 8;265(2):188-96.

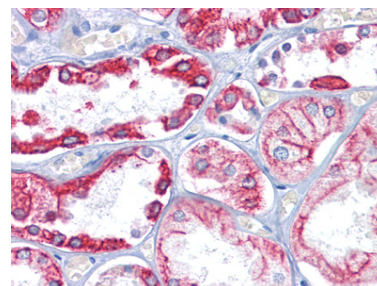


Figure 3: Immunohistochemical analysis of paraffin-embedded human kidney tissues using CK8 mouse mAb

For Research Use Only

Contact: Antagene, Inc. | Tel: 1 (866) 964-2589 | Fax: 1 (888) 225-1868 | Email: Info@antageneinc.com